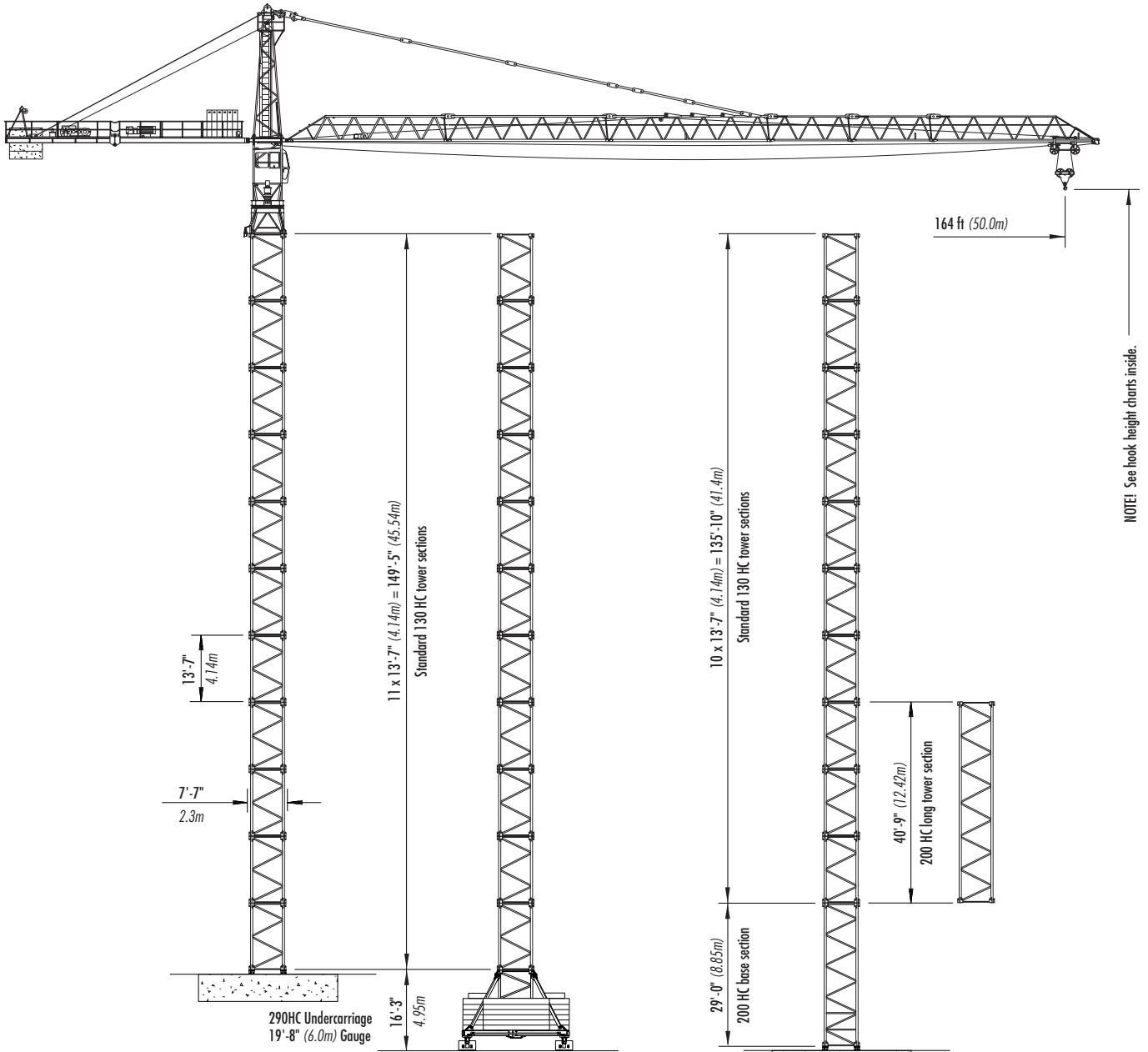


LIEBHERR 130 HC

TOWER CRANE



NOTE: See hook height charts inside.

Configuration I
with 130 HC Tower
max. 160 ft (48.9m) HUH on concrete foundation
max. 176 ft (53.6m) HUH on 290 HC undercarriage

Configuration II
with 130 HC/200 HC Tower
max. 176 ft (53.6m) HUH on concrete foundation

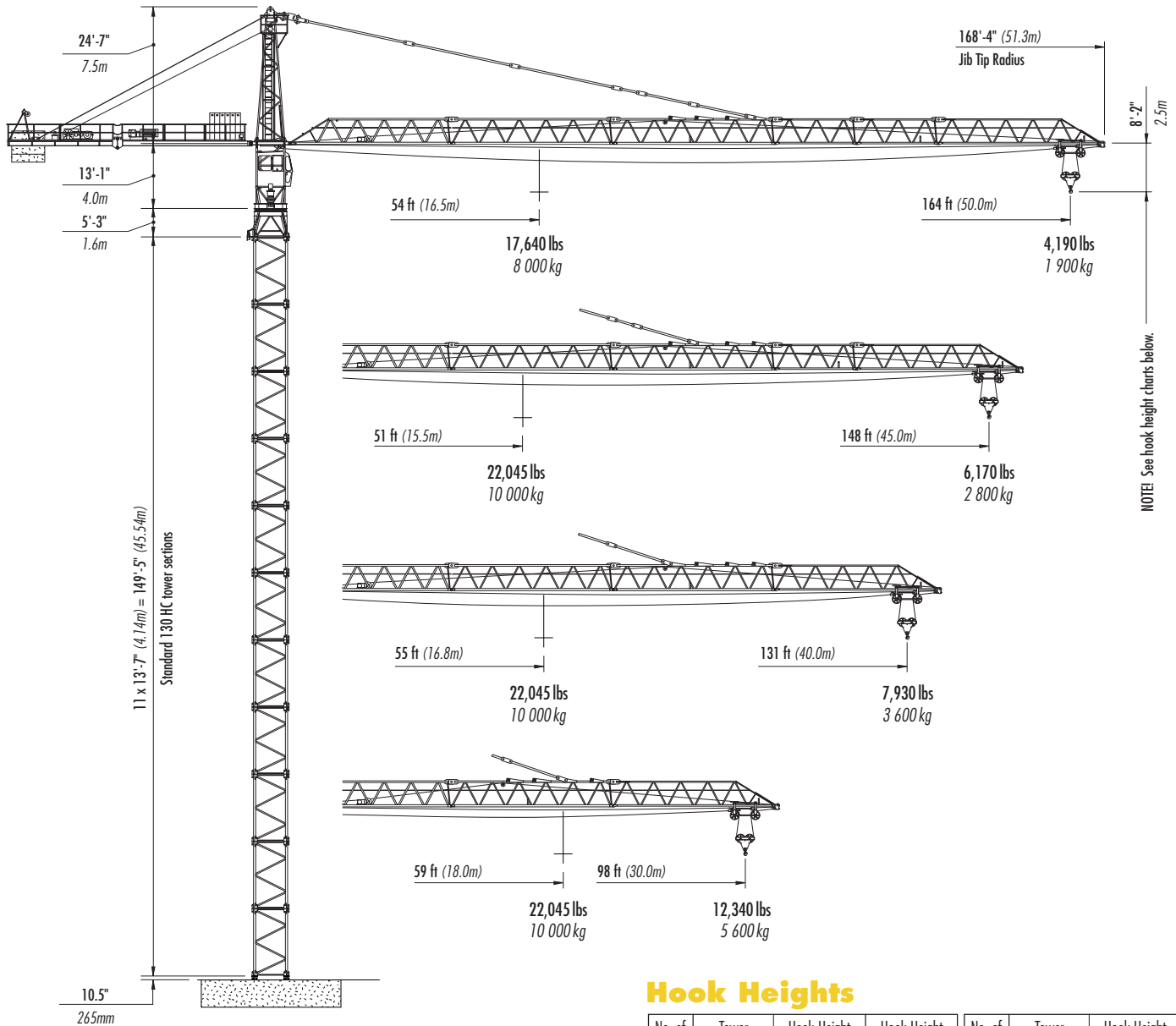
FREESTANDING
Travelling & Stationary



Morrow Equipment

Configurations

LIEBHERR 130 HC



NOTE! Consult Morrow for specific information regarding alternate tower configurations, alternate foundation details, dimensions, reaction forces and slab opening requirements.

Please consult the 130 HC Operation Manual before erecting, operating or dismantling the crane.

Specifications are subject to change without prior notice.

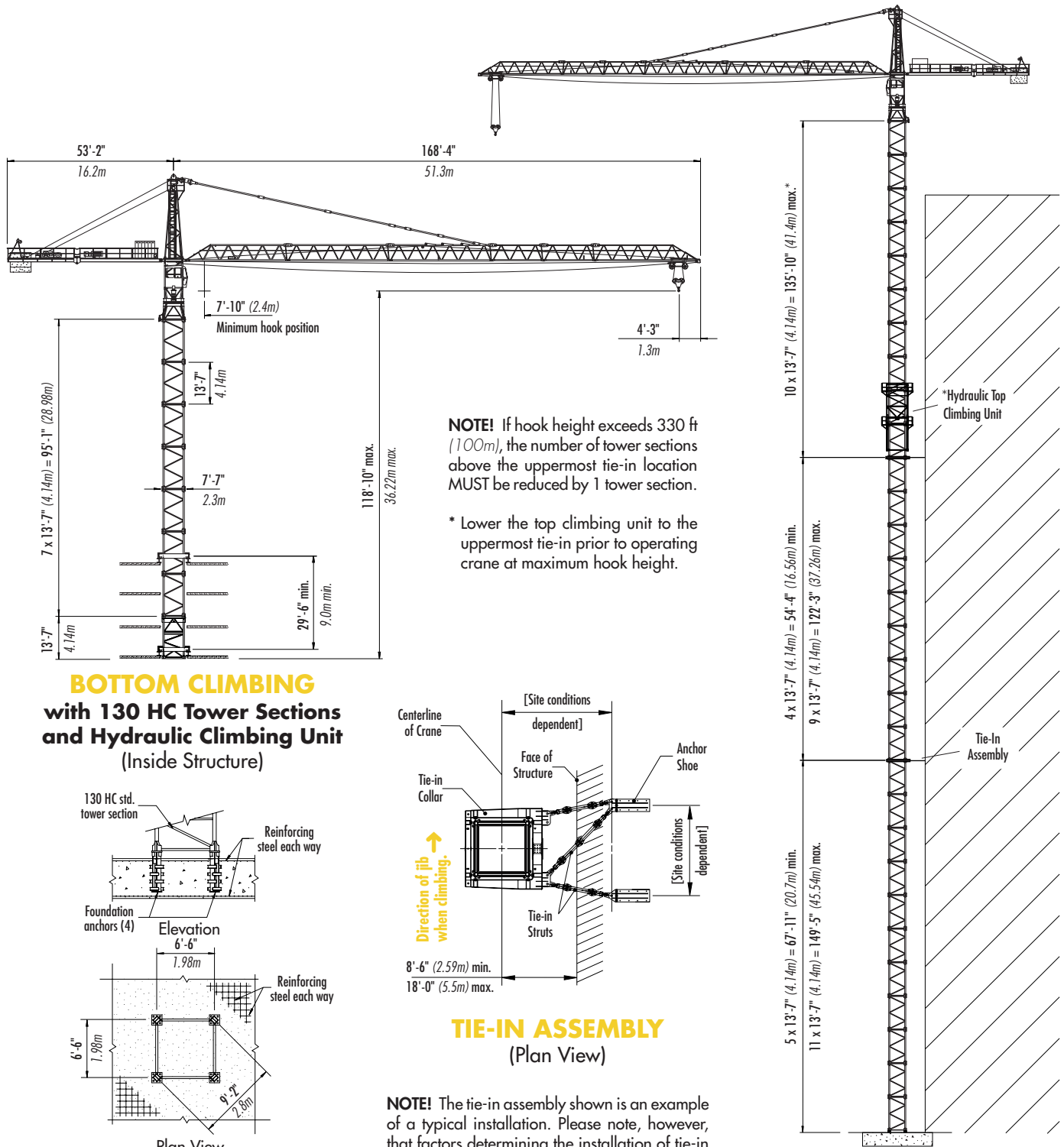
Hook Heights

No. of Tower Sections	Tower Configuration I	Hook Height Concrete Foundation		Hook Height 6m Undercarriage		No. of Tower Elements	Tower Configuration II	Hook Height Concrete Foundation	
		ft	m	ft	m			ft	m
1	130HC STS	24.6	7.5	40.1	12.2	1	200HC BTS	40.1	12.2
2	130HC STS	38.2	11.6	53.7	16.4	2	130HC STS	53.7	16.4
3	130HC STS	51.8	15.8	67.2	20.5	3	130HC STS	67.2	20.5
4	130HC STS	65.4	19.9	80.8	24.6	4	130HC STS	80.8	24.6
5	130HC STS	79.0	24.1	94.4	28.8	5	130HC STS	94.4	28.8
6	130HC STS	92.5	28.2	108.0	32.9	6	130HC STS	108.0	32.9
7	130HC STS	106.1	32.3	121.6	37.1	7	130HC STS	121.6	37.1
8	130HC STS	119.7	36.5	135.2	41.2	8	130HC STS	135.2	41.2
9	130HC STS	133.3	40.6	148.7	45.3	9	130HC STS	148.7	45.3
10	130HC STS	146.9	44.8	162.3	49.5	10	130HC STS	162.3	49.5
11*	130HC STS	160.5	48.9	175.9	53.6	11*	130HC STS	175.9	53.6

* Lower top climbing unit to base of crane prior to operating at maximum hook height.

Configurations

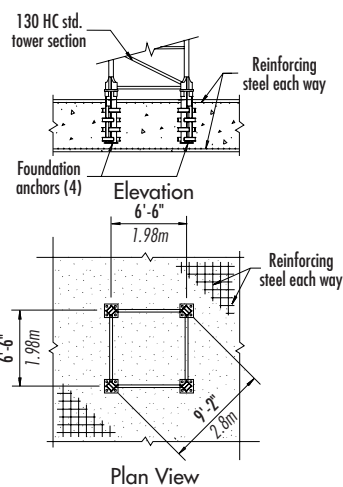
LIEBHERR 130 HC



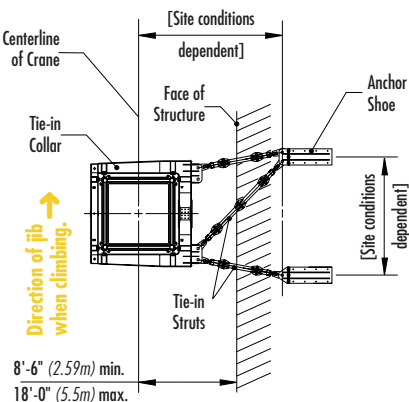
NOTE! If hook height exceeds 330 ft (100m), the number of tower sections above the uppermost tie-in location **MUST** be reduced by 1 tower section.

* Lower the top climbing unit to the uppermost tie-in prior to operating crane at maximum hook height.

BOTTOM CLIMBING with 130 HC Tower Sections and Hydraulic Climbing Unit (Inside Structure)



FOUNDATION DETAILS with 130 HC Tower Sections (Concrete Slab)



TIE-IN ASSEMBLY (Plan View)

NOTE! The tie-in assembly shown is an example of a typical installation. Please note, however, that factors determining the installation of tie-in assemblies may vary due to project specific criteria. Contact Morrow for information regarding dimensions, reaction forces, tie-in locations and slab opening requirements.

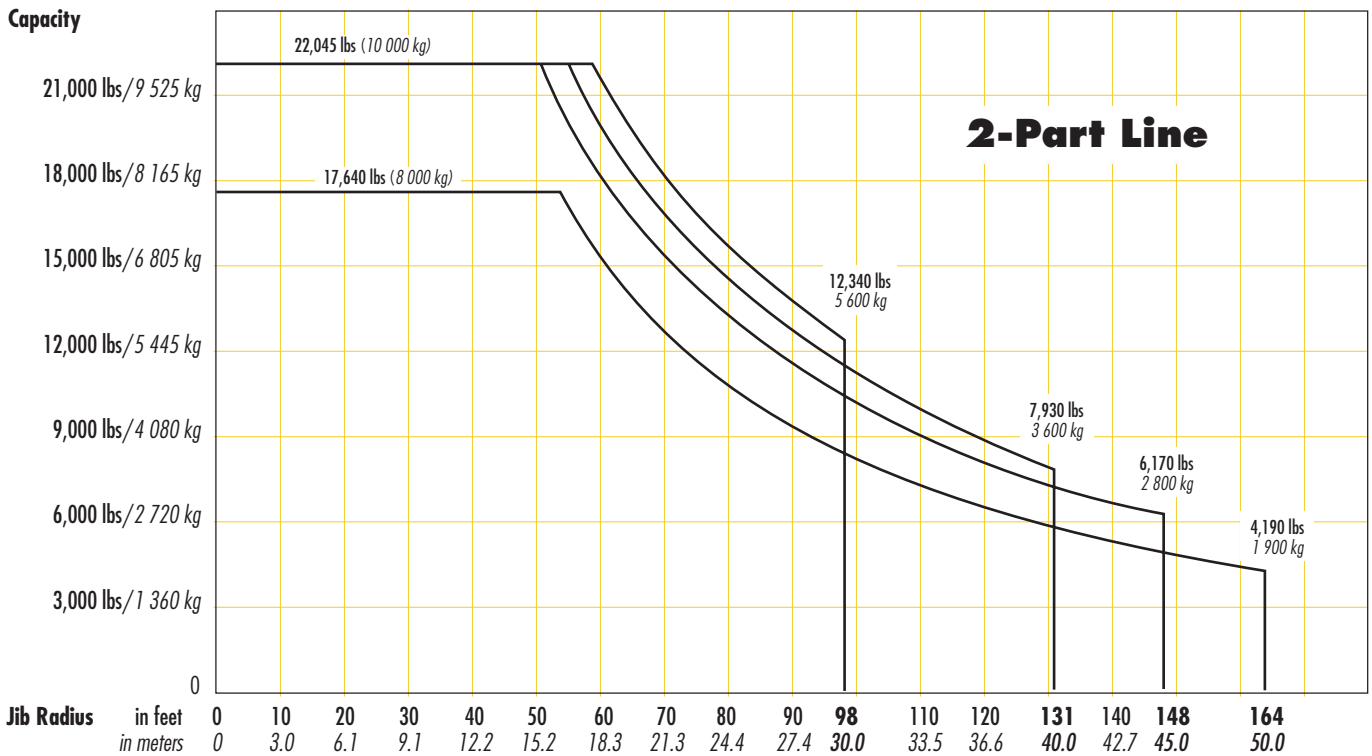
TOP CLIMBING with 130 HC Tower Sections (Tied to Structure)

Radius and Capacities

LIEBHERR Tower Crane Model 130 HC

2-Part Line

Hook Radius	2-Part Line Max Capacity – Radius	ft m	20 6.1	30 9.1	40 12.2	50 15.2	60 18.3	70 21.3	80 24.4	90 27.4	98 30.0	100 30.5	110 33.5	120 36.6	131 40.0	140 42.7	148 45.0	160 48.8	164 50.0
164 ft 50.0m	17,635 lbs – 54 ft 8 000 kg – 16.5m	lbs kg	17,635 8 000	17,635 8 000	17,635 8 000	17,635 8 000	15,520 7 040	12,950 5 875	10,800 4 900	9,490 4 305	8,400 3 810	8,200 3 720	7,250 3 290	6,480 2 940	5,750 2 610	5,250 2 380	5,000 2 270	4,400 1 995	4,190 1 900
148 ft 45.0m	22,045 lbs – 51 ft 10 000 kg – 15.5m	lbs kg	22,045 10 000	22,045 10 000	22,045 10 000	22,045 10 000	18,350 8 325	15,600 7 075	13,250 6 070	11,500 5 215	10,300 4 670	10,150 4 605	9,000 4 080	8,000 3 630	7,300 3 310	6,600 2 995	6,170 2 800		
131 ft 40.0m	22,045 lbs – 55 ft 10 000 kg – 16.8m	lbs kg	22,045 10 000	22,045 10 000	22,045 10 000	22,045 10 000	20,050 9 095	16,995 7 710	14,550 6 600	12,750 5 785	11,300 5 125	11,100 5 035	10,000 4 535	8,995 4 080	7,930 3 600				
98 ft 30.0m	22,045 lbs – 59 ft 10 000 kg – 18.0m	lbs kg	22,045 10 000	22,045 10 000	22,045 10 000	22,045 10 000	21,750 9 865	17,200 7 800	15,700 7 120	13,800 6 260	12,340 5 600								



SPECIFICATIONS

LIEBHERR Tower Crane Model 130 HC

Hoist Speed and Capacity

Hoist Unit	60285 LEW	2-Part Line				
		Gear	Capacity	Line Speed	Capacity	Line Speed
114 hp (85 kW) DC hoist unit 3-speed gearbox Ward Leonard Electromagnetic gear shifting	8L157	1	up to 22,045 lbs	@ 120 fpm	up to 10 000 kg	@ 37 m/min
		2	up to 13,250 lbs	@ 240 fpm	up to 6 010 kg	@ 73 m/min
		3	up to 5,800 lbs	@ 510 fpm	up to 1 770 kg	@ 155 m/min

IMPORTANT! Capacities and line speeds indicated will vary depending on the amount of hoist rope installed. This crane model may be equipped with a hoist unit other than that specified in the data above. To verify, check the serial number of the crane and refer to the 130 HC Operation Manual for additional information.

Motor Information

Drive Unit	Horsepower	Kilowatts	Speed	
Trolley	5.4 hp	4.0 kW	0 - 200 fpm	0 - 61.0 m/min
Swing	2 x 7.4 hp	2 x 5.5 kW	0.85 rpm	
Traveling (fluid coupling)	2 x 10 hp	2 x 7.5 kW	82 fpm	25.0 m/min




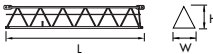




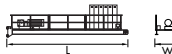



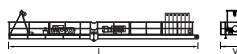
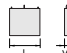




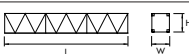
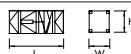
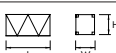
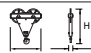
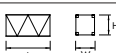
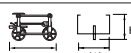
Power Requirements

480 Volts — 3-phase — 60-cycle	250 Amperes service with 114 hp (85 kW) 3-speed DC hoist unit
--------------------------------	---

Specifications subject to change without notice. For other configurations and specifications, contact Morrow Equipment.

Component List

LIEBHERR 130 HC

Description	Dimensions L x W x H	Weight	Description	Dimensions L x W x H	Weight
Tower Top (Complete) ¹	 25'-7" x 6'-3" x 6'-3" 7.8m x 1.9m x 1.9m	4,500 lbs 2 040 kg	Jib Section ① #611	 33'-2" x 6'-0" x 6'-11" 10.0m x 1.84m x 2.11m	6,000 lbs 2 720 kg
Slewing Assembly (Complete) ²	 19'-8" x 7'-9" x 8'-11" 6.0m x 2.35m x 2.73m	17,600 lbs 7 985 kg	Jib Section ② #621	 33'-2" x 5'-7" x 6'-11" 10.1m x 1.7m x 2.11m	3,300 lbs 1 500 kg
Slewing Assembly (Upper Part) ³	 13'-3" x 6'-4" x 5'-8" 4.05m x 1.93m x 1.73m	10,800 lbs 4 900 kg	Jib Section ③ #622	 34'-1" x 5'-7" x 7'-2" 10.4m x 1.7m x 2.18m	3,600 lbs 1 630 kg
Slewing Assembly (Lower Part) ⁴	 6'-5" x 7'-9" x 8'-11" 1.95m x 2.35m x 2.73m	6,800 lbs 3 085 kg	Jib Section ④ #632	 17'-9" x 5'-7" x 6'-11" 5.4m x 1.7m x 2.11m	1,400 lbs 635 kg
Counterjib Section #1 (Inner Part) ⁵	 27'-8" x 5'-9" x 8'-6" 8.44m x 1.74m x 2.6m	6,005 lbs 2 725 kg	Jib Section ⑤ #631	 17'-9" x 5'-7" x 6'-11" 5.4m x 1.7m x 2.11m	1,400 lbs 635 kg
Counterjib Section #2 (Outer Part) ⁶	 22'-7" x 10'-3" x 5'-1" 6.88m x 3.12m x 1.54m	9,920 lbs 4 500 kg	Jib Section ⑥ #641	 34'-5" x 5'-7" x 7'-2" 10.5m x 1.7m x 2.18m	2,400 lbs 1 100 kg
Counterjib (Comp) ⁷	 49'-6" x 10'-3" x 8'-6" 15.1m x 3.12m x 2.6m	15,925 lbs 7 225 kg	Jib Assembly ⁸ 164-ft (50.0m)	①②③④⑤⑥ 165'-8" x 5'-7" x 7'-2" 50.5m x 1.7m x 2.18m	20,745 lbs 9 410 kg
Counterweight Block A	 6'-8" x 7" x 6'-5" 2.03m x 0.17m x 1.96m	3,305 lbs 1 500 kg	Jib Assembly ⁸ 148-ft (45.0m)	①②③⑤⑥ 149'-3" x 5'-7" x 7'-2" 45.5m x 1.7m x 2.18m	19,100 lbs 8 665 kg
Counterweight Block B	 6'-8" x 7" x 4'-8" 2.03m x 0.17m x 1.41m	2,315 lbs 1 050 kg	Jib Assembly ⁸ 131-ft (40.0m)	①②③⑥ 132'-10" x 5'-7" x 7'-2" 40.5m x 1.7m x 2.18m	17,580 lbs 7 975 kg
Standard Tower Section 130 HC	 13'-7" x 7'-7" x 7'-7" 4.14m x 2.3m x 2.3m	3,530 lbs 1 600 kg	Jib Assembly ⁸ 98-ft (30.0m)	①③⑥ 100'-1" x 5'-7" x 7'-2" 30.5m x 1.7m x 2.18m	14,000 lbs 6 350 kg
Base Tower Section 200 HC	 29'-0" x 7'-7" x 7'-7" 8.85m x 2.3m x 2.3m	8,960 lbs 4 065 kg	Top Climbing Unit w/hydraulics (200HC)	 23'-6" x 9'-9" x 9'-3" 7.16m x 2.97m x 2.82m	16,535 lbs 7 500 kg
Long Tower Section 200 HC	 40'-9" x 7'-7" x 7'-7" 12.42m x 2.3m x 2.3m	11,245 lbs 5 100 kg	Bottom Climbing Unit w/hydraulics	 13'-7" x 7'-10" x 7'-10" 4.14m x 2.4m x 2.4m	9,150 lbs 4 150 kg
Standard Tower Section 200 HC	 13'-7" x 7'-7" x 7'-7" 4.14m x 2.3m x 2.3m	4,520 lbs 2 050 kg	Hook Block	 3'-8" x 1'-0" x 4'-3" 1.12m x 0.3m x 1.3m	660 lbs 300 kg
Standard Tower Section 290 HC	 13'-7" x 7'-7" x 7'-7" 4.14m x 2.3m x 2.3m	5,025 lbs 2 280 kg	Trolley	 6'-2" x 6'-0" x 3'-11" 1.88m x 1.83m x 1.2m	800 lbs 365 kg

NOTE: Weights and dimensions are approximate. Scale components before lifting.

¹ Tower Top Complete includes tower top, access ladder, platform and roller block.

² Slewing Assembly Complete includes operator's cab, swing motors, slewing ring, slewing ring support and climbing shoes.

³ Slewing Assembly Upper Part includes operator's cab and swing motors.

⁴ Slewing Assembly Lower Part includes slewing ring, slewing ring support and climbing shoes.

⁵ Counterjib Section #1 includes counterjib inner section, handrails, transformer, electrical panel and generator set.

⁶ Counterjib Section #2 includes counterjib outer section, handrails, hoist unit with frame [114 hp/85 kW], access platforms and brake pump. Does not include wire rope.

⁷ Counterjib Complete includes counterjib inner and outer sections, handrails, transformer, electrical panel, generator set, hoist unit with mounting frame, brake pump and access platforms. Does not include wire rope.

⁸ Jib Assemblies include jib sections, pendant bars, pendant bar connecting pins and plates, trolley drive unit, trolley wire rope and trolley.



Morrow Equipment
C O M P A N Y, L. L. C.

3218 Pringle Road SE • P O Box 3306 • Salem, Oregon 97302-0306 USA
Tel. 503.585.5721 • Fax. 503.363.1172 • www.morrowequipment.com

The American home of
LIEBHERR

Atlanta, GA • Charlotte, NC • Chicago, IL • Denver, CO • Honolulu, HI • Houston, TX • Los Angeles, CA • Las Vegas, NV
Millwood, NY • St. Louis, MO • San Francisco, CA • Seattle, WA • Miami, FL • Tampa, FL • Washington, DC
Sydney, Australia • Wellington, New Zealand • Vancouver, BC, Canada • Toronto, ON, Canada • México DF, México