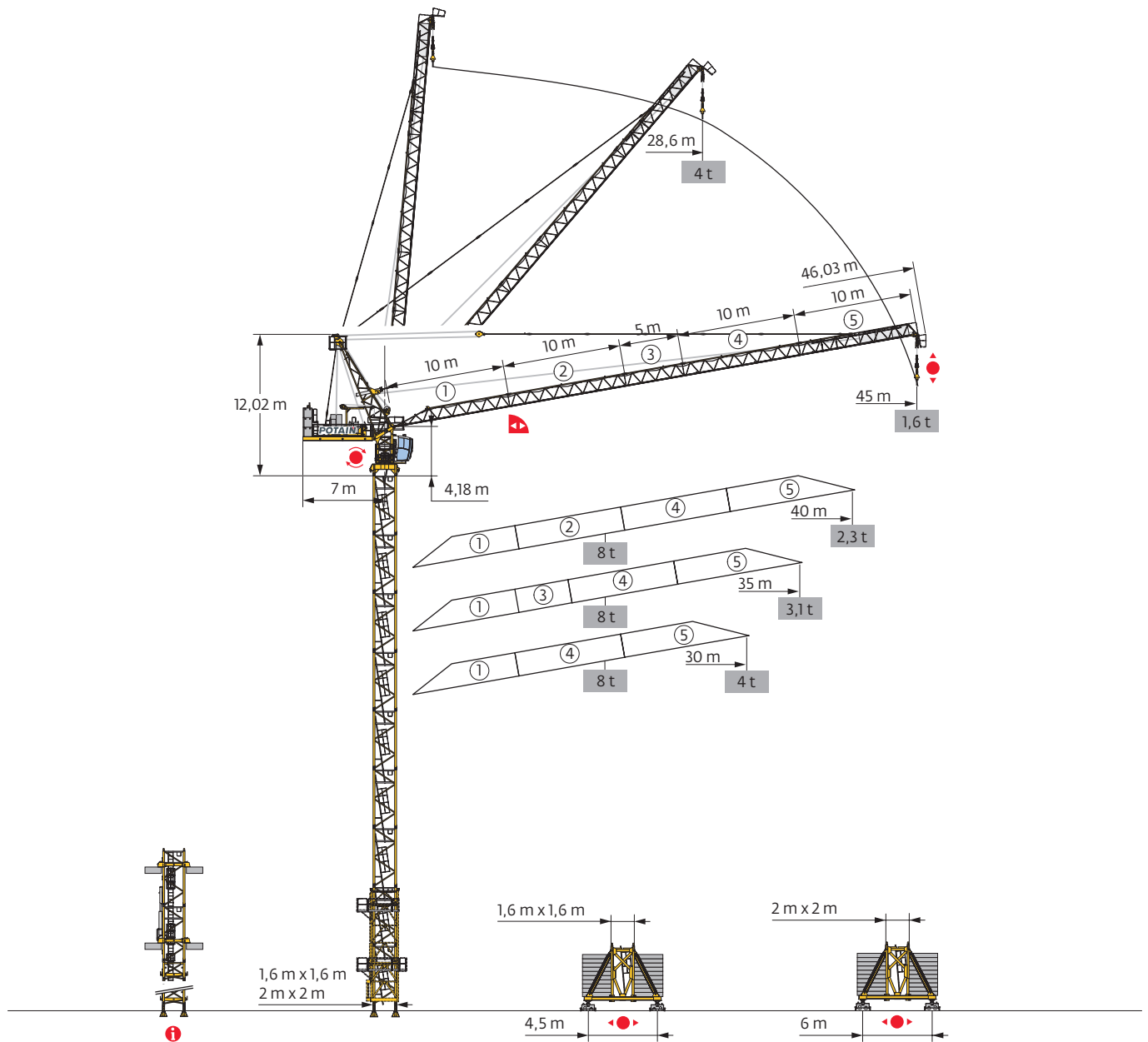
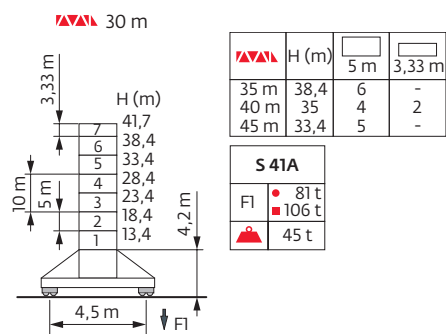
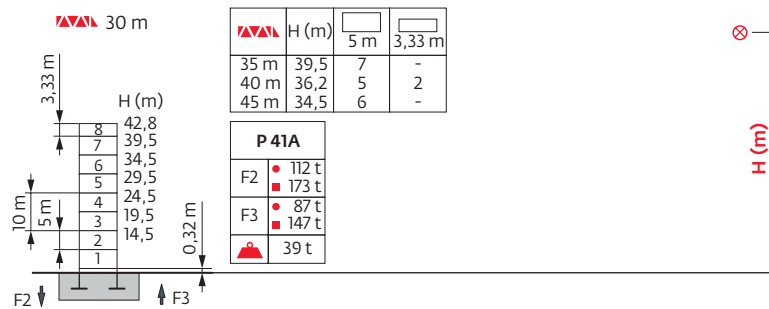


Potain MR 90 C

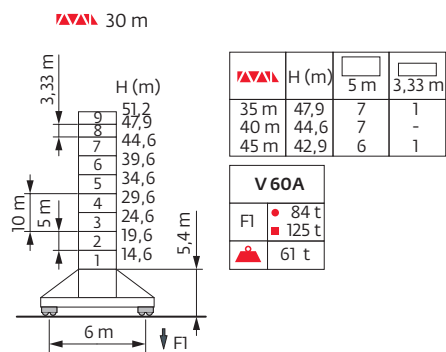
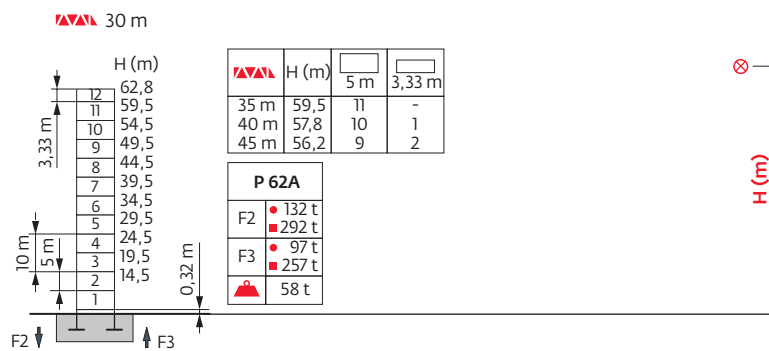


Mât - Réactions / Mast - Reaktionskräfte / Mast - Reactions / Mástil - Reacciones / Torre - Reazioni
 Tramo - Reações / Реакция опор мачты

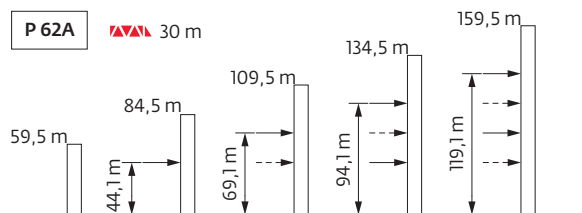
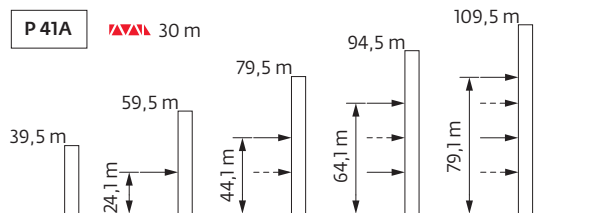
1,6 m



























2 m

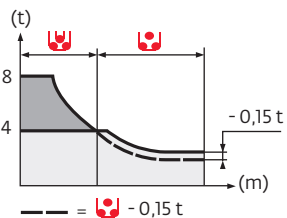



Ancrages / Verankerungen / Anchorages / Anclajes / Ancoraggi
 Ancoragem / Анкера



Courbes de charges / Lastkurven / Load curves / Curvas de cargas / Curve di carico
 Curvas de carga / Кривые нагрузок

 45 m	3,3	▶								28,6	30	32	35	37	40	42	45		
 	4 3,7 3,3 2,8 2,5 2,15 1,9 1,6 t																		
 40 m	3	▶	17,8	20	22	25	27	28	28,7	29,6	30	32	35	37	40	m			
   	8 6,8 5,9 4,8 4,3 4 4 - 3,7 3,3 2,8 2,5 2,1 t																		
 	4 3,9 3,5 3 2,7 2,3 t																		
 35 m	2,8	▶	18	20	22	25	27	28,6	29,3	30	30,2	32	35	m					
   	8 6,9 6 5 4,4 4 4 3,8 - 3,4 2,9 t																		
 	4 3,6 3,1 t																		
 30 m	2,5	▶	18,1	20	22	25	27	28	29,1	29,8	30	m							
   	8 7 6,1 5,1 4,5 4,3 4 4 3,9 t																		
 	4 t																		



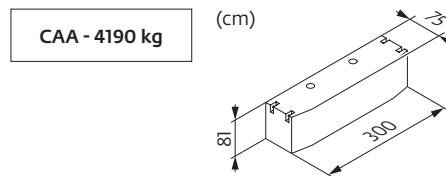
 =  -0,1t

Lest de base / Grundballast / Base ballast / Lastre de base / Zavorra di base
 Lastro da base / Базовый Балласт

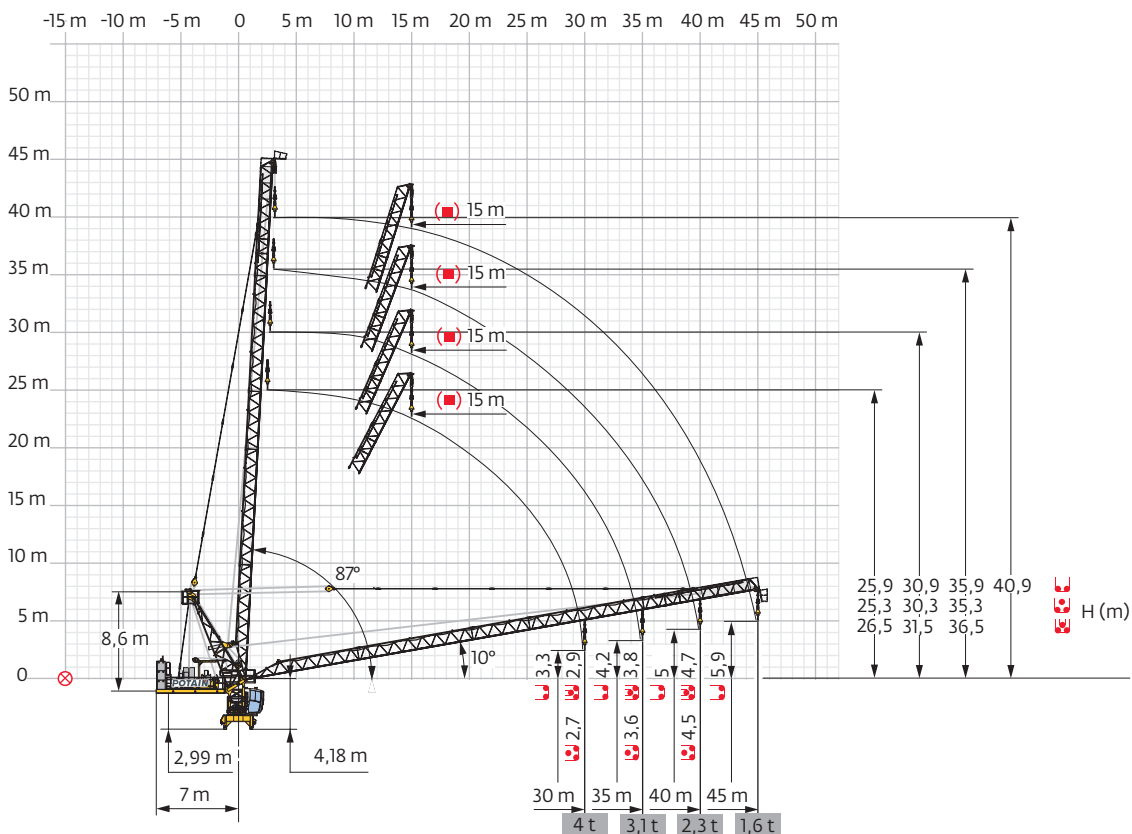
	1,6 m		2 m	
	S 41A		V 60A	
	H (m)	(t)	H (m)	(t)
30 m	41,7	126	51,2	132
35 m	38,4	126	47,9	132
40 m	35	126	44,6	132
45 m	33,4	126	42,9	132

Lest de contre-flèche / Gegenauslegerballast / Counter-jib ballast / Lastre de contra-flècha / Zavorra di controbraccio
 Lastro da contra lança / Противовес стрелы

	4190 kg	(kg)
30 m	3	12570
35 m	3	12570
40 m	3	12570
45 m	3	12570



Flèche relevée / Ausleger in Steilstellung / Luffing jib / Flecha izada / Braccio impennato
 Lança inclinada / Маховая стрела

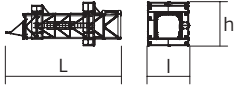

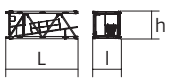

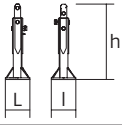
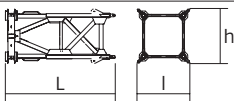

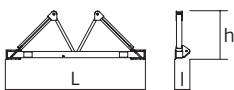


Encombremet et poids / Abmessungen und Gewicht / Dimensions and weight / Dimensiones y peso / Ingombro e peso
dimensões e pesos / габаритные размеры и вес

Partie tournante / Drehender Kranteil / Slewing crane part / Parte giratoria
Parte rotante / Parte rotativa / Поворотная часть :  45 m -  33 LVF



Partie tournante / Drehender Kranteil / Slewing crane part Parte giratoria / Parte rotante / Parte rotativa Поворотная часть		L (m)	l (m)	h (m)	kg (+/- 5%)	
Contre-flèche / Gegenausleger Counter-jib / Contra-flecha Controbraccio / Contra-lança Контр-стрела		6,15	3,94	3,21	2220	
Poinçon / Auslegerhaltebock Strut / Puntal Puntone / Extrator стойка		6,44	2,67	10,45	4670	
Cabine / Kabine Cab / Cabina Cabina / Cabina Кабина		Ultra View	3,56	2,21	2,51	1550
Pivot / Krankopf Towerhead / Pivote Portaralla / Pivot Секция поворотной части		∇ 1,6 m ∇ 2 m	2,1 2,48	2,78 2,98	2,7 2,7	3615 4430
Elément de flèche / Auslegerelement Jib section / Elemento de flecha Elemento di braccio / Elemento de lança Секция стрелы		①	10,15	1,53	1,45	735
Elément de flèche / Auslegerelement Jib section / Elemento de flecha Elemento di braccio / Elemento de lança Секция стрелы		②	10,1	1,16	1,38	650
		④	10,1	1,16	1,38	675
Elément de flèche / Auslegerelement Jib section / Elemento de flecha Elemento di braccio / Elemento de lança Секция стрелы		③	5,1	1,16	1,38	360
		⑤	10,08	1,47	1,35	690
Moufle / Hubflasche Pulley block / Aparejo Bozzello / Cadernal Полиспаст		1,42 0,4	0,22 0,28	1,2 0,73	290 160	
Treuil de levage (+ câble) / Hubwerk (+ Seil) Hoisting winch (+ rope) / Mecanismo de elevación (+ cabo) Argano di sollevamento (+ fune) Guincho de elevação (+ cabo) Подъемная лебедка (+ канатом)		33 LVF 50 LVF	2,18 2,29	1,54 1,51	1,63 1,63	1555 2145
Treuil de levage (+ câble) / Auslegerverstellwerk (+ Seil) Luffing winch (+ rope) / Mecanismo de izado (+ cabo) Argano di Impennaggio braccio (+ fune) Mecanismo de Inclinação da Lança (+ cabo) лебедка подъема стрелы (+ канатом)		50 VVF	2,55	1,72	1,87	1890

Equipement de télescopage / Teleskopierausrüstung / Telescoping equipment Equipo de telescopaje / Equipaggiamento di telescopaggio / Equipamento de telescopagem Оборудование для телескопирования		L (m)	I (m)	h (m)	kg (+/- 5%)	
Cage de télescopage / Teleskopwagen Telescopic cage / Jaula de telescopaje Gabbia di telescopaggio / Gaiola de telescopagem для телескопирования крана		□1,6 m □2 m	11,2 11,5	3,94 4,21	5865 8235	
Mâture / Mastwerk / Masts Mástil / Torre / Coluna Мачты						
K 437B K 639B		□1,6 m □2 m	10,21 10,23	1,67 2,07	3450 5290	
K 437A K 439A KR 639A K 639A		□1,6 m □1,6 m □2 m □2 m	5,21 5,21 5,23 5,23	1,67 1,67 2,07 2,07	1850 2230 3245 2805	
K 437C K 639C		□1,6 m □2 m	3,45 3,57	1,67 2,07	1360 1985	
Bases / Kranbasen / Crane bases Bases / Basi / Bases фундамент под кран						
Pieds de scellement / VerankerungsfüÙe Fixing angles / Pie de empotramiento Montante da annegare / Angulos fixadores анкера		P 41A P 62A	0,37 0,65	0,37 0,65	135 295	
Mât-châssis / Grundmasteinheit Basic mast unit / Tramo-chassis Elemento base / Tramo-chassis Мачта для крепления к шасси		S 41A V 60A	3,63 5,01	1,96 2,41	2965 4390	
Haubans / Mastabstützungen Struts / Tornapuntas Puntoni / Escoras Растяжка		S 41A V 60A	3,18 4,51	0,26 0,29	0,24 0,29	225 420
Sommier / Unterwagenhälfte Half-bearer / Testero Testata / Estrutura base Траверса		S 41A V 60A	5,08 6,7	0,6 0,7	1,78 2,31	1145 1600

Mécanismes / Triebwerke / Mechanisms / Mecanismos / Meccanismi
 Mecanismos / Механизмы

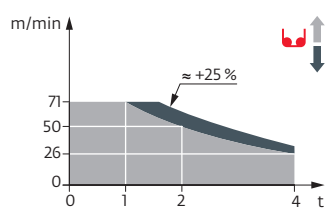
400 V - 50 Hz											ch - PS hp	kW	
	33 LVF 20 Optima	m/min	26	34	50	71	13	17	25	35,5	33	22	469 m
		t	4	3	2	1	8	6	4	2			
	50 LVF 20 Optima	m/min	44	58	82	118	22	29	41	59	50	37	697 m
		t	4	3	2	1	8	6	4	2			
	50 VVF 20		1 min 25 s							50	37		
	RVF 152 Optima+	tr/min U/min rpm	0 → 0,8							2 x 5,5	2 x 4		
	RT 443 A1 - 2V R ≥ 10 m	m/min	15 - 30							4 x 5	4 x 3,7		
	RT 544 A1 - 2V R ≥ 13 m	m/min	13,5 - 27							4 x 7	4 x 5,2		

400 V (+10% -10%) 50 Hz	33 LVF : 95 kVA 50 LVF : 112 kVA

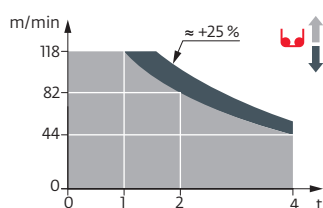
480 V - 60 Hz											ch - PS hp	kW	
	33 LVF 20 Optima	m/min	26	34	50	71	13	17	25	35,5	33	22	469 m
		t	4	3	2	1	8	6	4	2			
	50 LVF 20 Optima	m/min	44	58	82	118	22	29	41	59	50	37	697 m
		t	4	3	2	1	8	6	4	2			
	50 VVF 20		1 min 25 s							50	37		
	RVF 152 Optima+	tr/min U/min rpm	0 → 0,8							2 x 5,5	2 x 4		
	RT 443 A1 - 2V R ≥ 10 m	m/min	18 - 36							4 x 6	4 x 4,4		
	RT 544 A1 - 2V R ≥ 13 m	m/min	16 - 32							4 x 8,4	4 x 6,2		

480 V (+6% -10%) 60 Hz	33 LVF : 95 kVA 50 LVF : 112 kVA

33 LVF 20 Optima



50 LVF 20 Optima



	FR	DE	EN	ES	IT	PT	RU
	Réactions en service	Reaktionskräfte in Betrieb	Reactions in service	Reacciones en servicio	Reazioni in servizio	Reacções em serviço	Реакция при работе
	Réactions hors service	Reaktionskräfte außer Betrieb	Reactions out of service	Reacciones fuera de servicio	Reazioni fuori servizio	Reacções fora de serviço	Реакция в покое
	Poids à vide sans lest avec flèche et hauteur maximum	Gewicht ohne Last, ohne Ballast, mit Ausleger und max. Höhe	Weight without load, without ballast, with jib and max. height	Peso en vacío sin lastre, con flecha y altura máxima	Peso a vuoto, senza zavorra, con braccio e altezza massimi.	Peso em vazio sem lastro com lança e altura máxima.	Вес пустого, без балласта, со стрелой, максимальной высоты.
	Poids total du lest	Ballast-Gesamtgewicht	Total ballast weight	Peso total del lastre	Peso totale della zavorra	Peso total do lastro	Общий вес балласта
	Courbes de charges sans plate-forme d'intervention	Lastkurven ohne Arbeitsbühne	Load curves without inspection platform	Curvas de cargas sin plataforma de servicio	Curve di carico senza piattaforma di intervento	Curvas de carga sem plataforma de intervenção	Кривые грузоподъемности без технической платформой
	Courbes de charges avec plate-forme d'intervention déduire 0,1 t	Lastkurven mit Arbeitsbühne 0,1 t abziehen	Load curves with inspection platform, deduct 0,1 t	Curvas de cargas con plataforma de servicio descontar 0,1 t	Curve di carico con piattaforma di intervento detrarre 0,1 t	Curvas de carga com plataforma de intervenção deduzir 0,1 ton	Кривые грузоподъемности с технической платформой - вычесть 0,1 т
	Axe articulation flèche	Auslegergelenk-achse	Jib articulation axis	Eje de articulación de la flecha	Perno di articolazione del braccio	Eixo de articulação da lança	Ось шарнира стрелы
	Position girovrette	Windfreistellung	Weathervaning position	Posición veleta	Libera rotazione	Posição em cata-vento	Флюгер
	Camion 13,4 m	Lkw 13,4 m	Lorry 13,4 m	Camión 13,4 m	Camion 13,4 m	Camião 13,4 m	Рзусовой автомобиль 13,4 м
	Conteneur High Cube 40', et/ou Flat Rack 20'	Container High Cube 40', and/oder Flat Rack 20'	Container High Cube 40', and/or Flat Rack 20'	Contenedor High Cube 40', y/o Flat Rack 20'	Container High Cube 40', e/o Flat Rack 20'	Contentor High Cube 40', e/ou Flat Rack 20'	40-футовый контейнер повышенной вместимости High Cube, и/или 20-футовая открытая платформа Flat Rack
	Cadre d'ancrage serré	Fester Verankerungsrahmen	Tightened anchorage frame	Marco de anclaje de apriete	Quadro di ancoraggio stretto	Quadro de amarração apertado	Прикрепленная анкерная рама
	Cadre d'ancrage desserré	Loser Verankerungsrahmen	Loosened anchorage frame	Marco de anclaje de desapriete	Quadro di ancoraggio allentato	Quadro de amarração solto	Отсоединенная анкерная рама
	Levage	Heben	Hoisting	Elevación	Sollevamento	Elevação	Подъем
	Relevage	AL-Verstellen	Luffing	Izado	Brandeggio	Levantamento	Маховый подъем
	Orientation	Schwenken	Slewing	Orientación	Rotazione	Rotação	Поворот
	Translation	Kranfahren	Travelling	Traslación	Traslazione	Translação	Перемещение крана
	Puissance nominale	Nennleistung	Rated power	Potencia nominal	Potenza nominale	Potência nominal	Номинальная мощность
	Nous consulter	AufAnfrage	Consult us	Consultarnos	Consultateci	Consultar-nos	Проконсультируйтесь у нас
	Document commercial non contractuel. Pour toute information technique se référer à la notice correspondante.	Unverbindliches Vertriebsdokument. Für technische Informationen, siehe die entsprechenden Anweisungen.	This commercial document is not legally binding. For any technical information, please refer to the corresponding instructions.	Documento comercial no contractual. Para cualquier información técnica, ver la noticia correspondiente.	Documento commerciale non vincolante, per tutte le informazioni tecniche fare riferimento al catalogo istruzioni.	Documento comercial não contractual. Para qualquer informação técnica complementar consultar as respectivas instruções.	Этот коммерческий документ не является юридически обязательным. Для получения технической информации, см. соответствующие инструкции.



Manitowoc - Americas
Manitowoc, Wisconsin, USA
 Tel: +1 920 684 6621
 Fax: +1 920 683 6277

Shady Grove, Pennsylvania, USA
 Tel: +1 717 597 8121
 Fax: +1 717 597 4062

Manitowoc - Europe, Middle East & Africa
Ecully, France
 Tel: +33 (0)4 72 18 20 20
 Fax: +33 (0)4 72 18 20 00

Manitowoc - Asia & Pacific
Shanghai, China
 Tel: +86 21 6457 0066
 Fax: +86 21 6457 4955