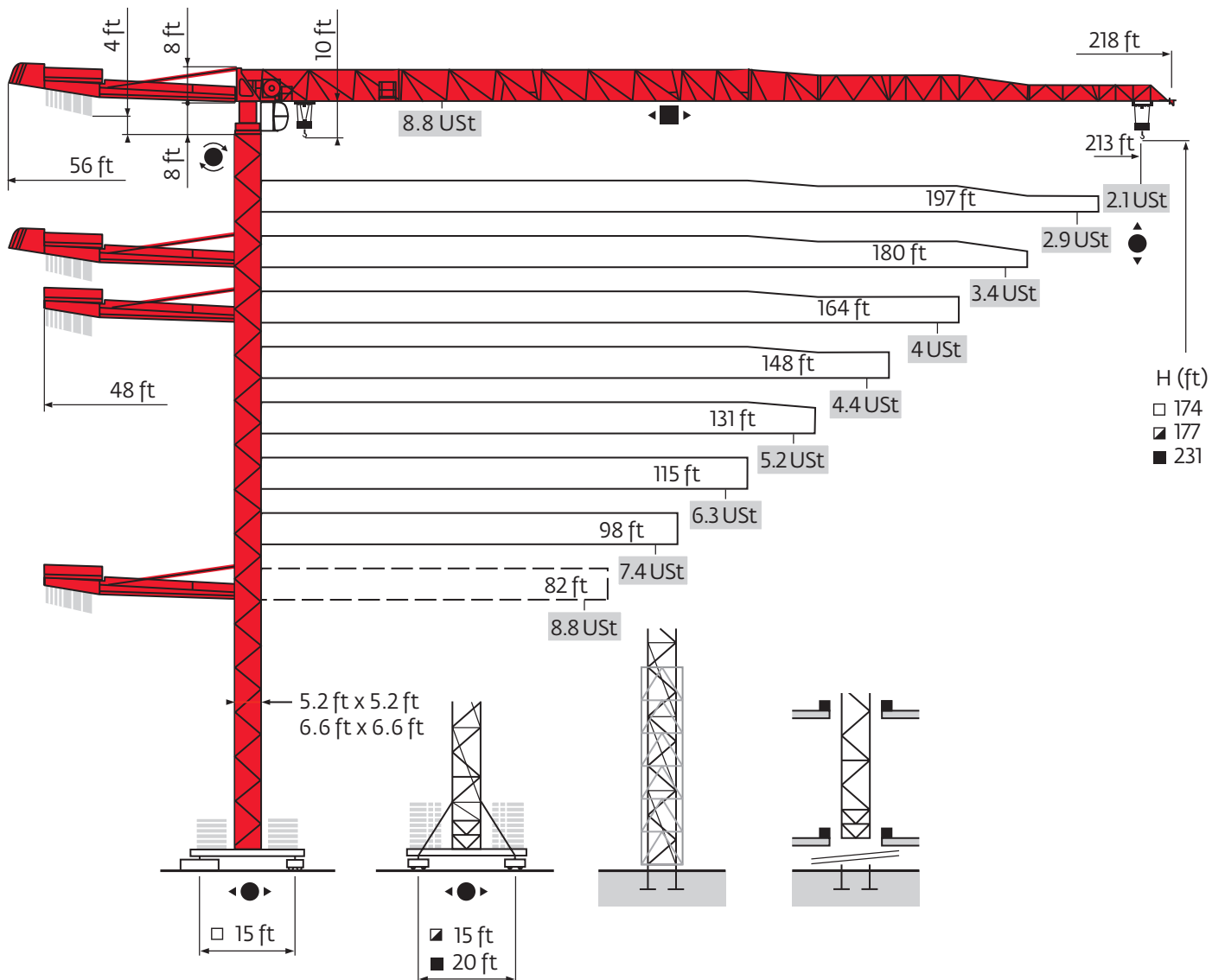


Potain MDT 218 A

Data Sheets

FEM 1.001-A3

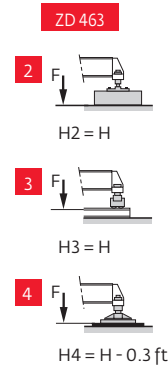
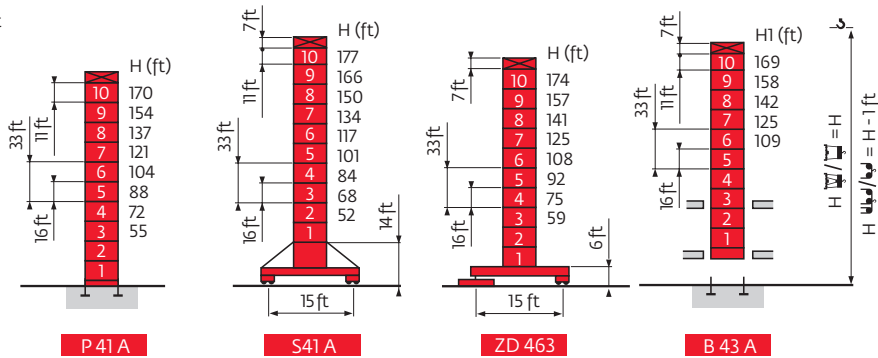
MDT 218 A J8



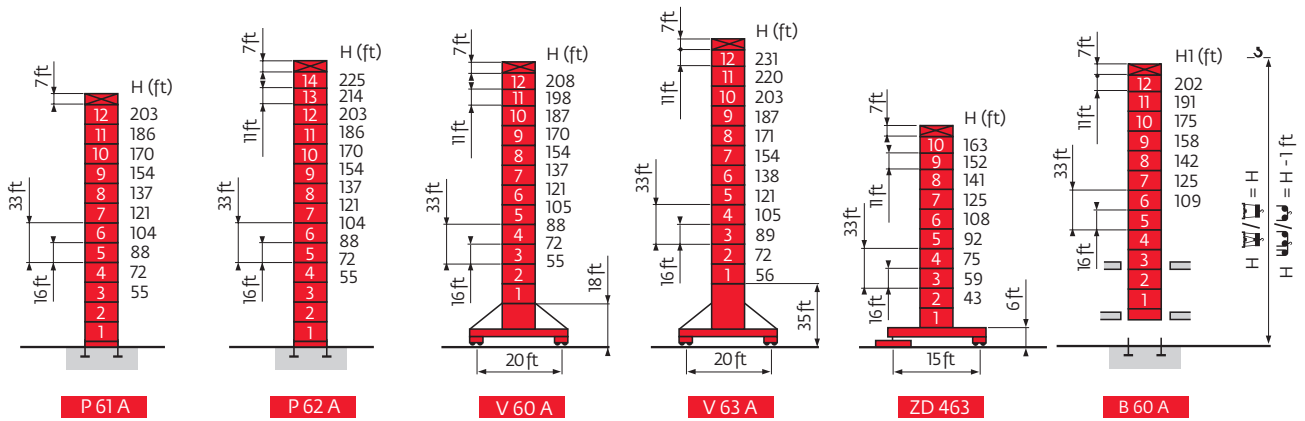
Values have been rounded

Mast

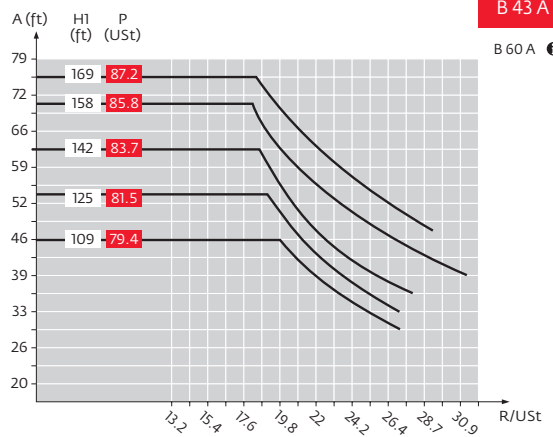
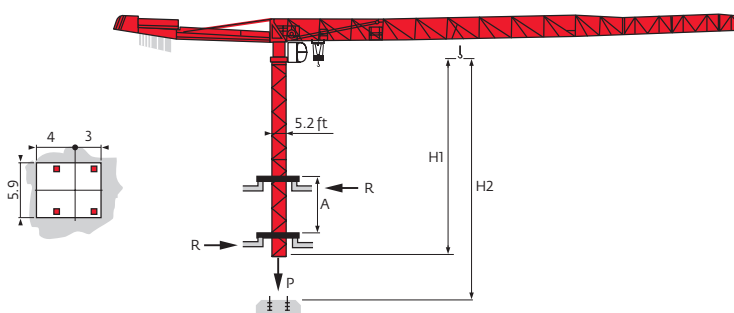
□ 5.2 ft



□ 6.6 ft







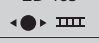







Climbing crane

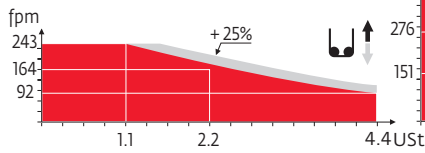


- A** Distance between collars
- H1** Crane height
- P** Crane weight (in service)
- R** Horizontal reaction
- See climbing crane

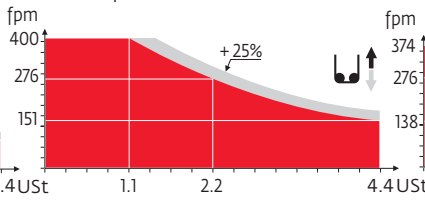
Mechanisms

														hp	kW		
	33 LVF20 Optima	fpm	7	29	92	118	164	243	4	14	46	59	82	121	30	22	951 ft
		USt	4.4	4.4	4.4	3.3	2.2	1.1	8.8	8.8	8.8	6.6	4.4	2.2			
	50 LVF20 Optima	fpm	12	49	151	190	276	400	6	25	75	95	138	200	50	37	1191 ft
		USt	4.4	4.4	4.4	3.3	2.2	1.1	8.8	8.8	8.8	6.6	4.4	2.2			
	50 LVF20 GH Optima	fpm	12	46	138	184	276	374	6	23	69	92	138	187	50	37	1985 ft
		USt	4.4	4.4	4.4	3.3	2.2	1.1	8.8	8.8	8.8	6.6	4.4	2.2			
	7 DVF 4	fpm	0 - 259												6.5	4.8	
	RVF152 Optima +	rpm	0 - 0.8												2 x 5.5	2 x 4	
	ZD 463 RT443 AI2V	fpm	59 - 118												4 x 6	4 x 4.4	
	S 41 A RT443 AI2V R ≥ 10 m	fpm	59 - 118												4 x 6	4 x 4.4	
	V 60 A RT544 AI2V R ≥ 13 m	fpm	53 - 105												4 x 8.4	4 x 6.2	
	V 63 A																
CEI 38  IEC 38		kVA															
480 V (+6% -10%) 60 Hz		33 LVF : 50 kVA 50 LVF : 65 kVA															

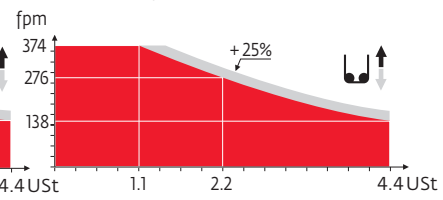
33 LVF 20 Optima



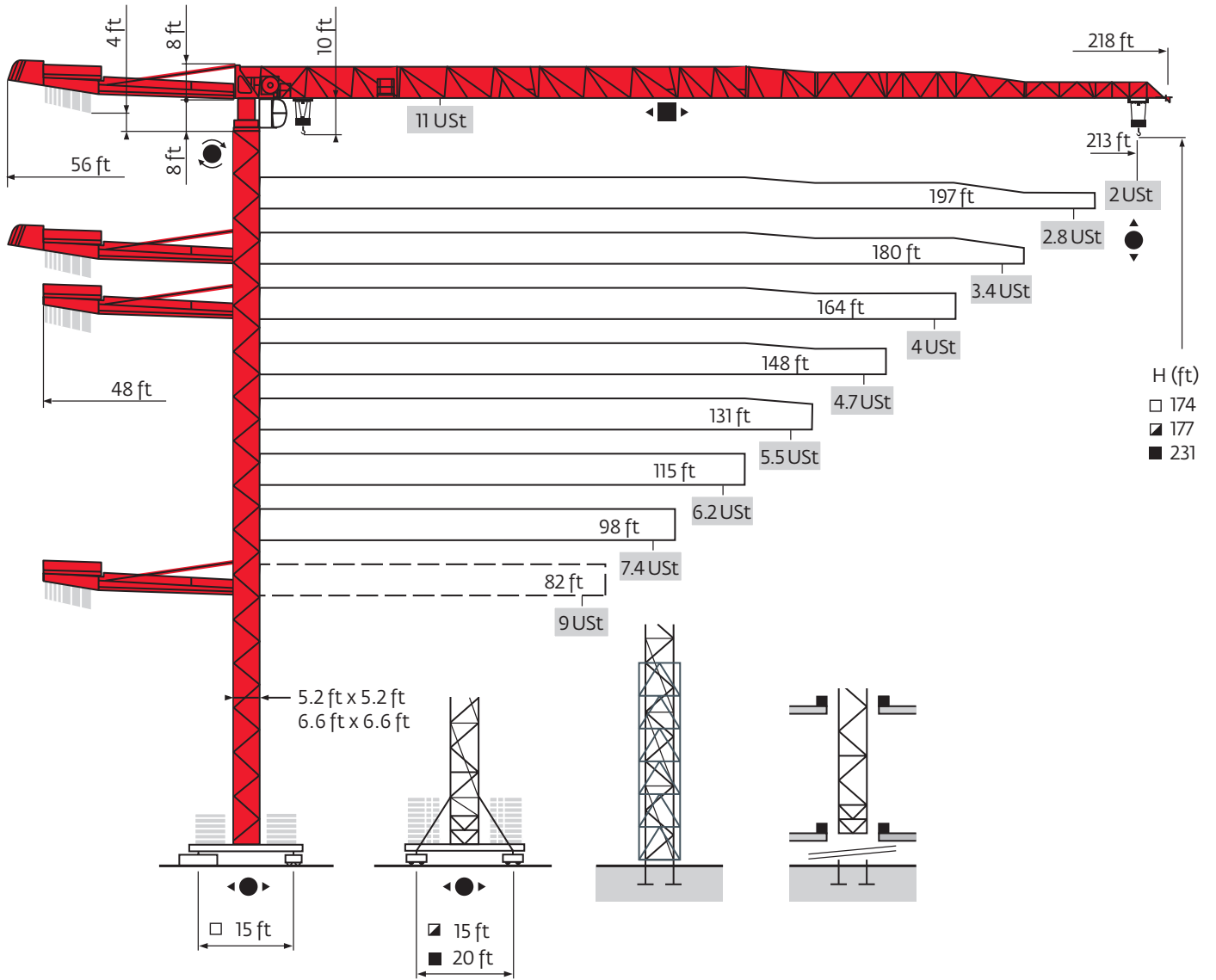
50 LVF 20 Optima



50 LVF 20 GH Optima

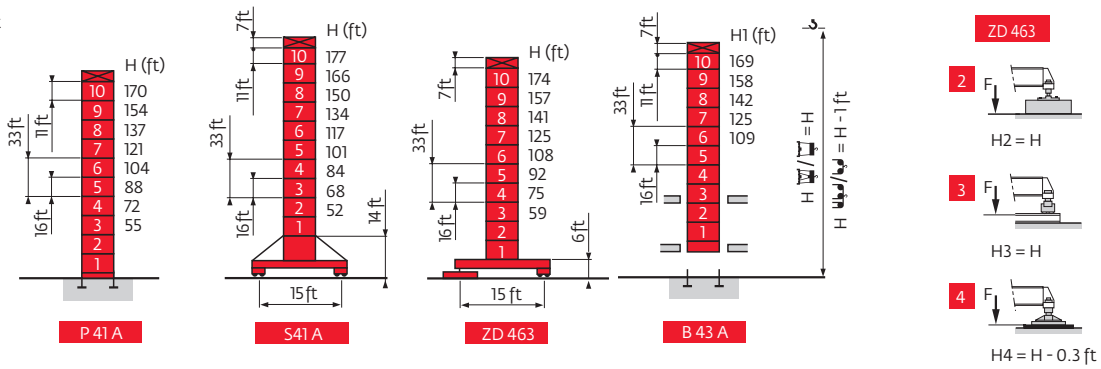


MDT 218 A J10

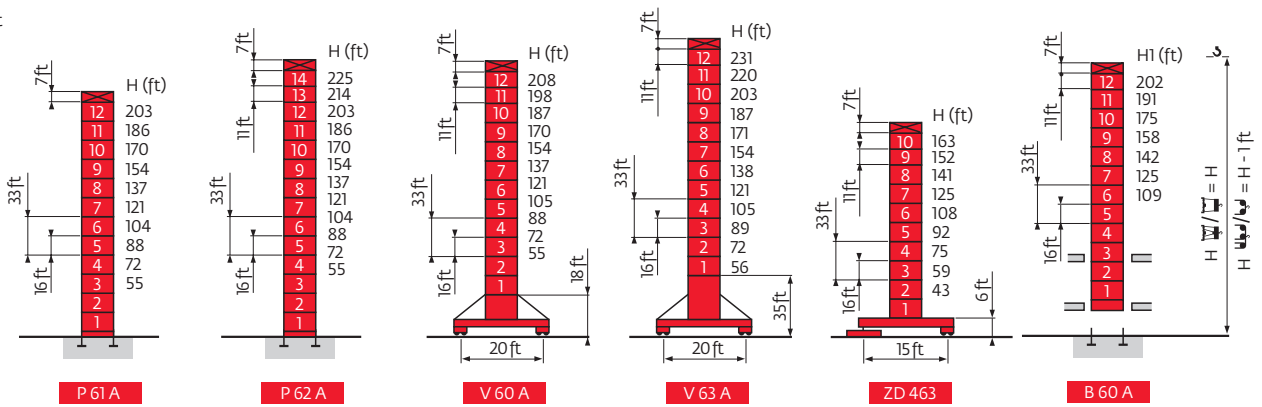


Mast

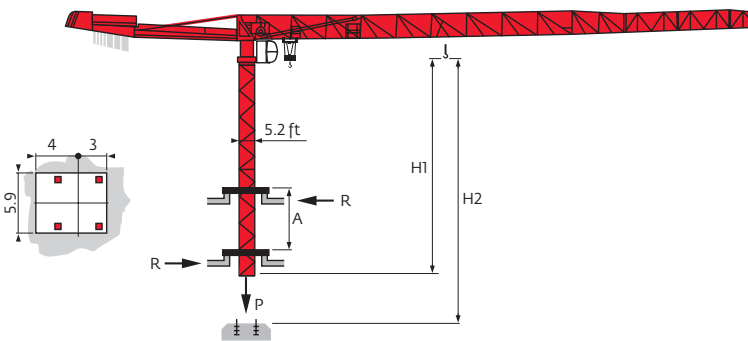
☑ 5.2 ft



☑ 6.6 ft



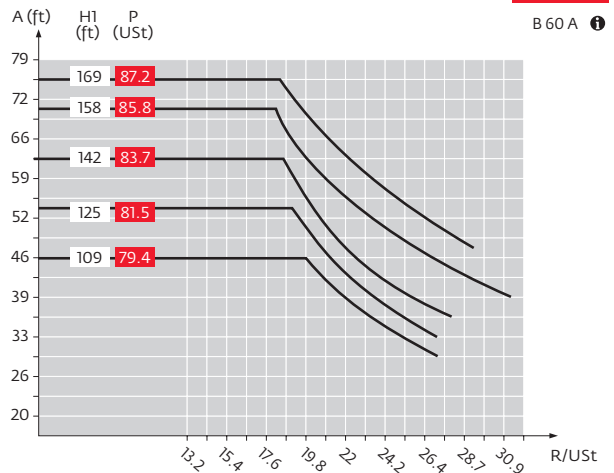
Climbing crane







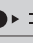


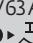


- A** Distance between collars
- H1** Crane height
- P** Crane weight (in service)
- R** Horizontal reaction
- See climbing crane

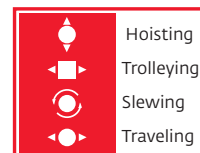
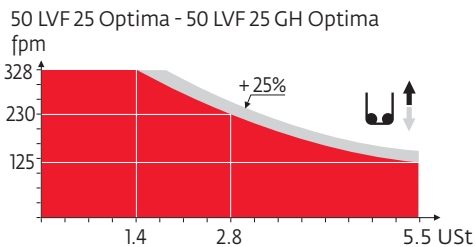
B 43 A

B 60 A



Mechanisms

		USt							USt							hp	kW										
	50 LVF25 Optima	fpm	10	-	39	-	125	-	164	-	230	-	328	5	-	20	-	62	-	82	-	115	-	164	50	37	912 ft
	50 LVF25 GH Optima	fpm	3	-	39	-	125	-	164	-	230	-	328	5	-	20	-	62	-	82	-	115	-	164	50	37	1690 ft
	7 DVF4	fpm	0 - 259											6.5	4.8												
	RVF152 Optima+	rpm	0 - 0.8											2 x 5.5	2 x 4												
ZD463 	RT443 A12V	fpm	59 - 118											4 x 6	4 x 4.4												
S41A 	RT443 A12V R ≥ 10m	fpm	59 - 118											4 x 6	4 x 4.4												
V60A 	RT544 A12V R ≥ 13m	fpm	53 - 105											4 x 8.4	4 x 6.2												
V63A 																											
CEI 38  IEC 38													kVA														
480 V (+6% -10%) 60 Hz													50 LVF : 65 kVA														



Constant improvement and engineering progress make it necessary that we reserve the right to make specification, equipment and price changes without notice. Illustrations shown may include optional equipment and accessories, and may not include all standard equipment.



www.manitowoc.com

Regional Headquarters

Americas

Manitowoc, Wisconsin, USA
Tel: +1 920 684 6621
Fax: +1 920 683 6277

Shady Grove, Pennsylvania, USA
Tel: +1 717 597 8121
Fax: +1 717 597 4062

Europe, Middle East, Africa

Ecully, France
Tel: +33 472 18 2020
Fax: +33 472 18 2000

Asia - Pacific

Shanghai, China
Tel: +86 21 6457 0066
Fax: +86 21 6457 4955

Potain MDT 218 A