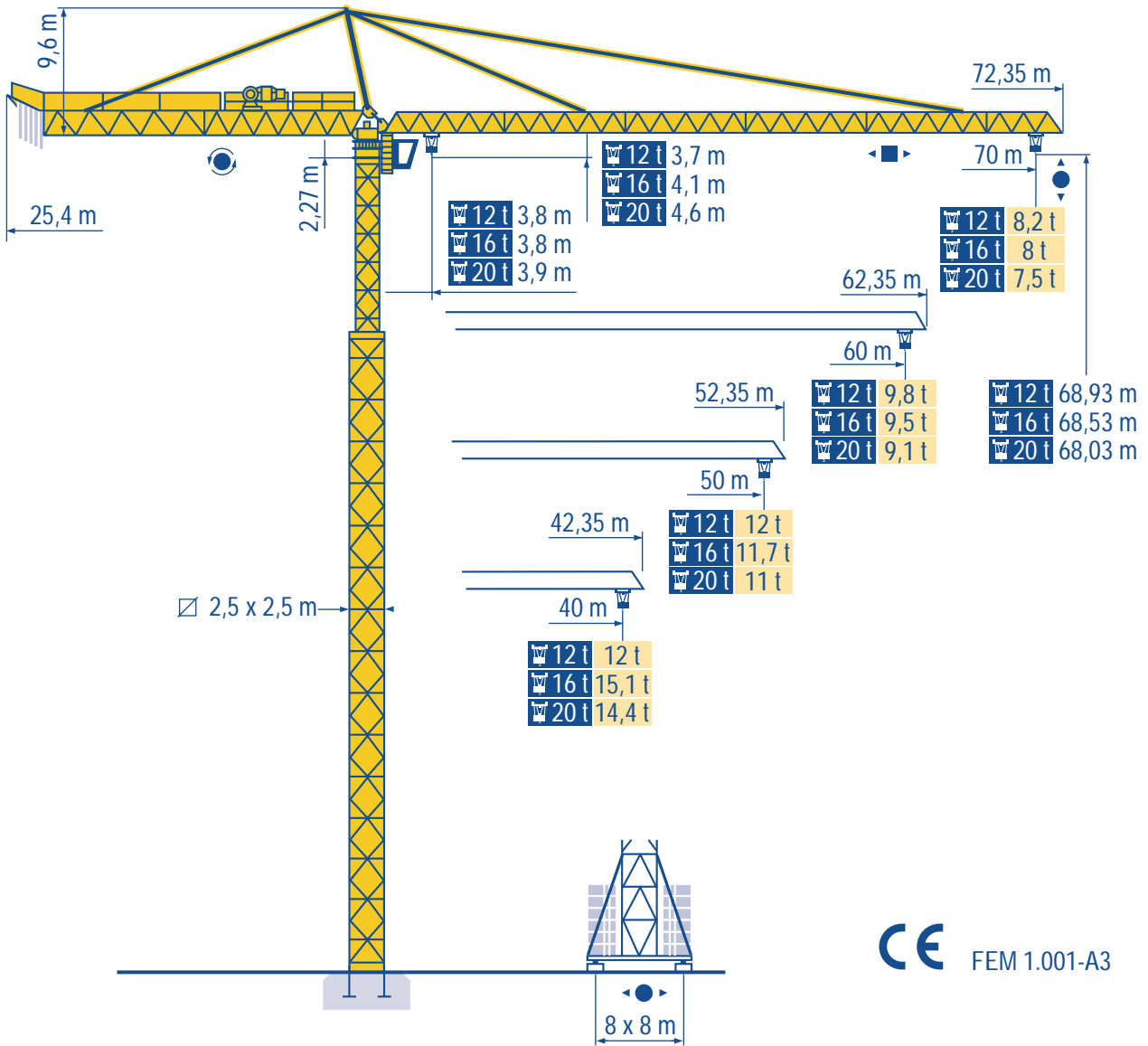


MD 600

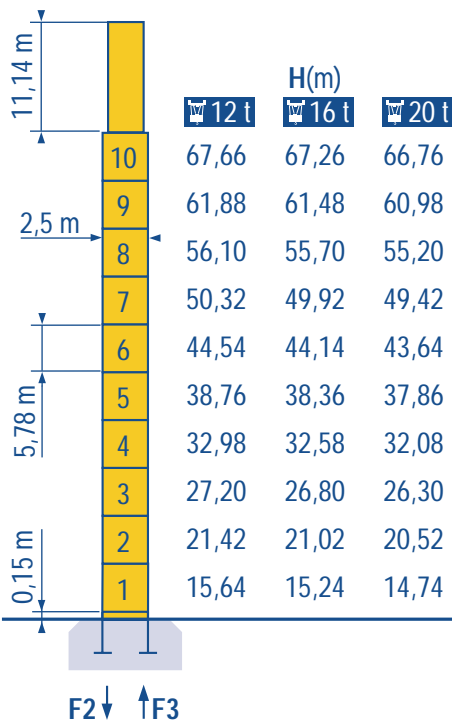


- HD HDM
- HDT
- GTMR
- CITY CRANE
- TOPKIT MD MAXI MD
- MAXI TOPKIT
- Topless MDT
- MR

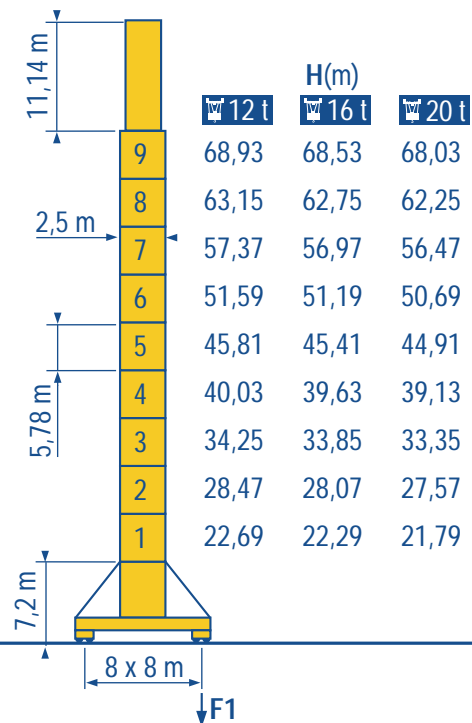
CE FEM 1.001-A3



2,5 m x 2,5 m



PA 867



YA 866

F2	12 t	● 199 t	■ 144 t
	16 t	● 202 t	■ 143 t
	20 t	● 204 t	■ 141 t

F3	12 t	● 120 t	■ 71 t
	16 t	● 121 t	■ 70 t
	20 t	● 120 t	■ 67 t

▲	12 t	119 t
	16 t	119 t
	20 t	121 t

F1	12 t	● 121 t	■ 97 t
	16 t	● 123 t	■ 97 t
	20 t	● 125 t	■ 97 t

▲	12 t	136 t
	16 t	136 t
	20 t	138 t

LNF 1

● Réactions en service
■ Réactions hors service
▲ A vide sans lest (ni train de transport) avec flèche et hauteur maximum.

F

Reactions in service
Reactions out of service
Without load, ballast (or transport axles), with maximum jib and maximum height.

GB

Reazioni in servizio
Reazioni fuori servizio
A vuoto, senza zavorra (ne assali di trasporto) con braccio massimo e altezza massima.

I

● Reaktionskräfte in Betrieb
■ Reaktionskräfte außer Betrieb
▲ Ohne Last, Ballast (und Transportachse), mit Maximalausleger und Maximalhöhe.

D

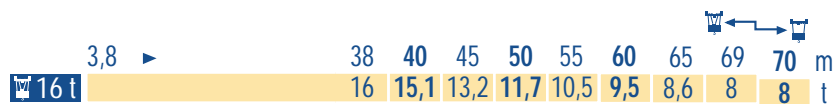
Reacciones en servicio
Reacciones fuera de servicio
Sin carga, sin lastre, (ni tren de transporte), flecha y altura máxima.

E

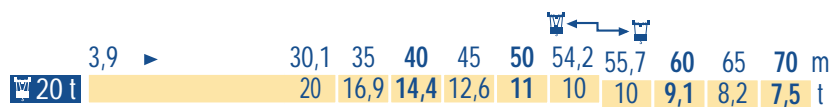
工作状态下的反应
非工作状态下的反应
空载无压重也无运输车
有吊臂和最大高度

C

40/50/60/70 m

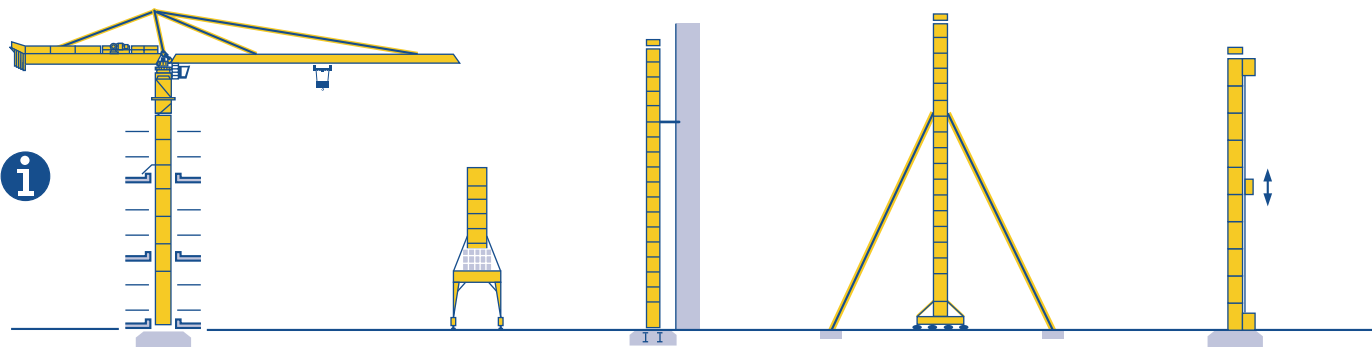


16t - 12t = 0,3 t



20t - 16t = 0,35 t

LNF 1



LNF 1

i Nous consulter



























Consult us



Consultateci

i Auf Anfrage












Consultarnos

请向我方咨询

										ch - PS hp	kW	
												
		55 RCS 30	m/min	0 → 34	0 → 68	-	0 → 17	0 → 34	-	55	40,5	365 m > 365 
			t	6	3	-	12	6	-			
		70 RCS 30 C	m/min	0 → 40	0 → 80	-	0 → 20	0 → 40	-	70	51	565 m > 565 
	t	6	3	-	12	6	-					
	120 LMD 30 S	m/min	0 → 65	0 → 130	0 → 260	0 → 32,5	0 → 65	0 → 130	120	88	600 m > 600 	
	t	6	3	1,5	12	6	3					
	55 RCS 40	m/min	0 → 25	0 → 50	-	0 → 12,5	0 → 25	-	55	40,5	468m > 468 	
	t	8	4	-	16	8	-					
	120 LMD 40 S	m/min	0 → 48	0 → 97	0 → 194 ▽	0 → 24	0 → 48	0 → 97 ▽	120	88	593 m > 593 	
	t	8	4	2	16	8	4					
	120 LMD 50 S	m/min	0 → 39	0 → 78	0 → 156 ▽	0 → 19,5	0 → 39	0 → 78 ▽	120	88	545 m > 545 	
		t	10	5	2,5	20	10	5				
	15 DRC 8	m/min	0 - 4 → 43 - 86						14	10,3		
	RTV	tr/min U/min rpm	0 → 0,7						2 x 16	2 x 12		
	RT 664 A2B - 2V	m/min	16 - 32						6 x 7	6 x 5,2		
	TCV 669 ARC	m/min	10 - 50						6 x 6,8	6 x 5		
	 12 t											H ≤ 40,03 m
 16 t	H ≤ 39,63 m											
 20 t	H ≤ 39,13 m											

CEI 38 	IEC 38	kVA	
400 V (+6% -10%) 50 Hz		55 RCS : 90 kVA 70 RCS : 110 kVA 120 LMD : 160 kVA	84/534 - 87/405

LNF 1

	Levage		Hoisting		Sollevamento	
	Distribution		Trolleying		Distribuzione	
	Orientation		Slewing		Rotazione	
	Translation		Travelling		Traslazione	
	Survitesse uniquement en descente		Lowering super speed		Survelocita' solo in discesa	
	Conforme aux directives CEE 84/534 et 87/405 sur le niveau acoustique		In compliance with the EEC 84/534 and 87/405 Instructions on noise level		Conforme alle direttive CEE 84/534 e 87/405 sul livello acustico	
	Nous consulter		Consult us		Consultateci	
	Heben		Elevación		起升	
	Katzfahren		Distribución		变幅	
	Schwenken		Orientación		回转	
	Kranfahren		Traslación		行走	
	Schnellgang nur für senken		Sobrevelocidad solo en bajada		具有下降超速性能	
	Gemäss EWG-Richtlinien 84/534 und 87/405 für den Schall-Leistungspegel		Conforme con las directivas CEE 84/534 y 87/405 sobre el nivel acustico		符合 CEE 84/534 - CEE 87/405 声晌度规定	
	Auf Anfrage		Consultarnos		请向我方咨询	

Ref. 1997.47 LNF 5



18.Rue de Charbonnières, B.P. 173
F-69132 ECULLY Cedex
Tél. (33)04.72.18.20.20
Fax (33)04.72.18.20.00
http://www.potain.com
E-mail : mkt@potain.fr

MD 600
Copyright.Reproduction interdite © POTAIN 1997

Deutschland
POTAIN GmbH Tel : 06.105.704.0
Italia
POTAIN S.p.A. Tel : 0.331.49.33.11
Singapore
POTAIN PTE LTD Tel : (00.65) 227.1550