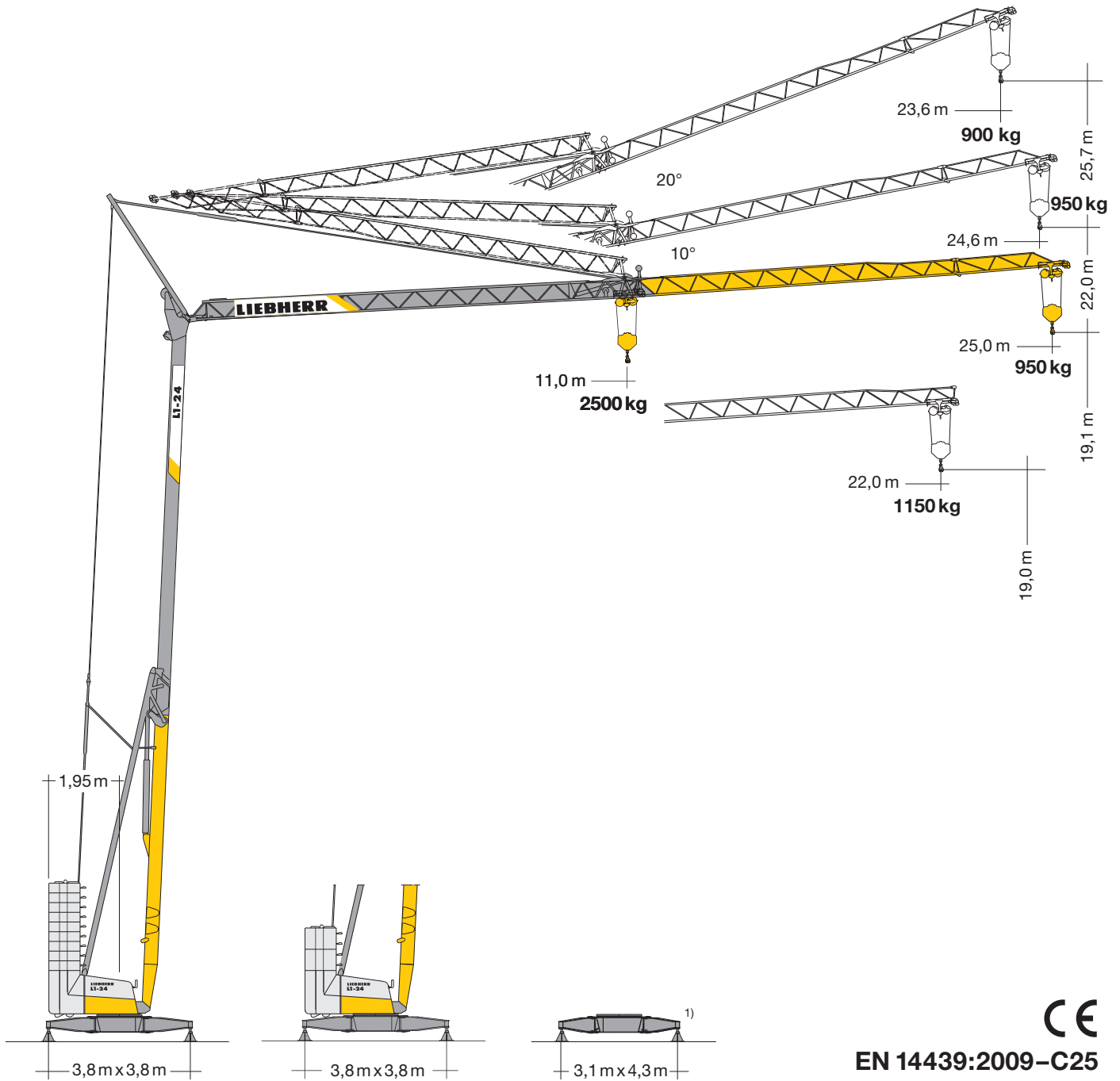


Turmdrehkran L1-24

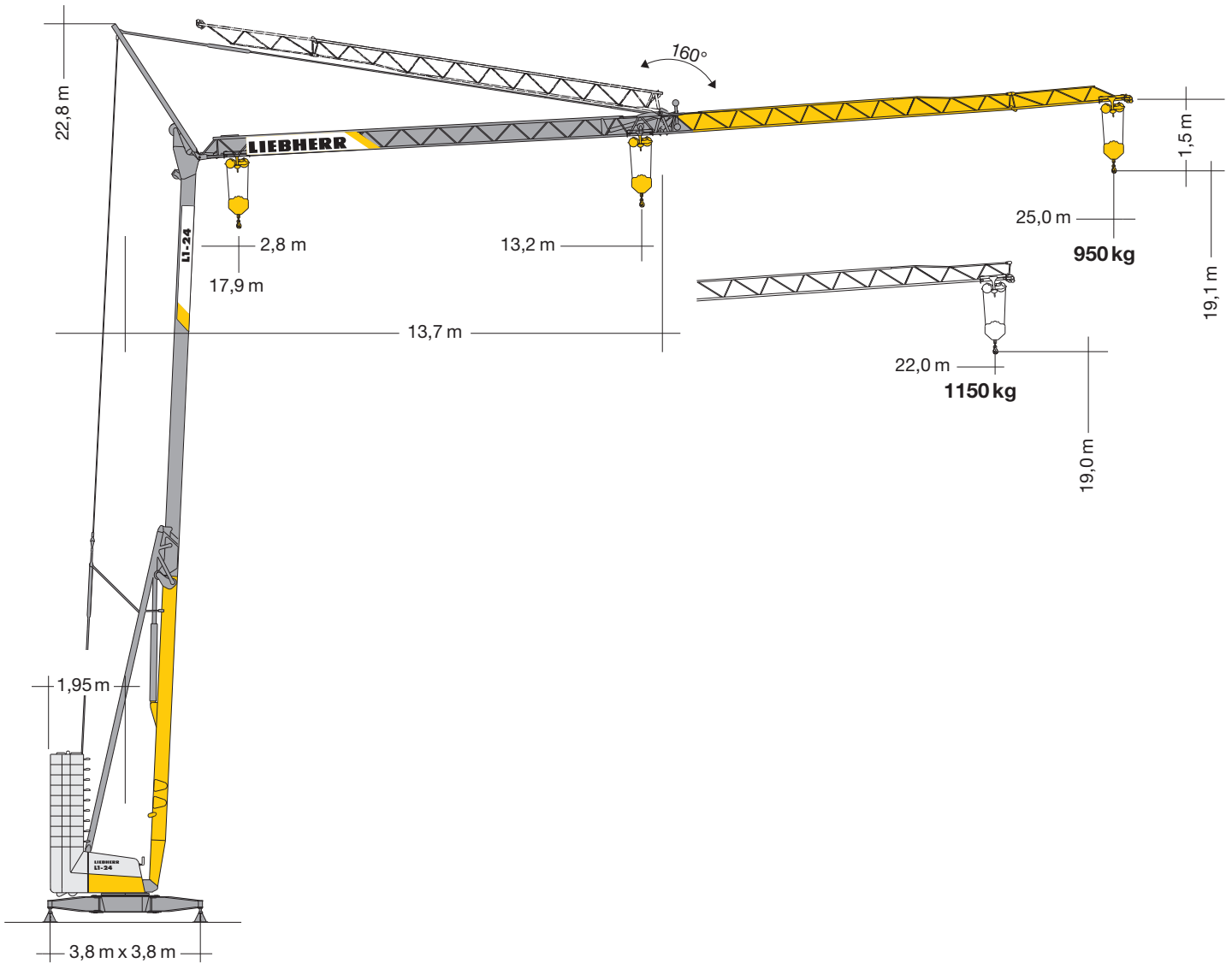
Tower Crane / Grue à tour / Gru a torre / Grúa torre
Guindaste de torre / Башенный поворотный кран

▶ **25 m**
27 m

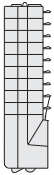



EN 14439:2009-C25

LIEBHERR



Gewicht Weight / Poids / Peso / Peso / Pesos / Macca

	12.260 kg	r = 1,95 m		7100 kg
	15.230 kg ¹⁾			

Ausladung und Tragfähigkeit

Radius and capacity / Portée et charge / Sbraccio e portata
Alcances y cargas / Alcance e capacidade de carga / Вылет и грузоподъемность

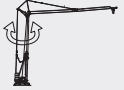


m	m/kg	m/kg																
		10,0	11,0	12,0	13,0	13,2	14,0	15,0	16,0	17,0	18,0	19,0	20,0	21,0	22,0	23,0	24,0	25,0
25,0	2,8 – 11,0 2500	2500	2500	2260	2050	2010	1870	1720	1600	1490	1390	1300	1230	1160	1100	1040	990	950
22,0	2,8 – 11,4 2500	2500	2500	2350	2130	2100	1960	1800	1660	1550	1450	1360	1280	1210	1150			
13,2	2,8 – 11,6 2500	2500	2500	2410	2190	2150												


m	m/kg	Auslegersteilstellung 10° / Elevated jib 10° / Flèche inclinée 10° / Braccio inclinato a 10° Pluma inclinada 10° / Lança inclinada 10° / Положение стрелы под углом 10°																	
		10,0	11,0	12,0	13,0	13,1	14,0	15,0	16,0	17,0	18,0	19,0	20,0	21,0	21,7	23,0	24,0	24,6	
25,0	2,7 – 15,0 1700	1700	1700	1700	1700	1700	1700	1700	1570	1460	1360	1280	1200	1140	1100	1020	980	950	
22,0	2,7 – 15,6 1700	1700	1700	1700	1700	1700	1700	1700	1640	1530	1420	1340	1270	1190	1150				
13,2	2,7 – 13,1 1700	1700																	

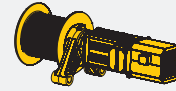

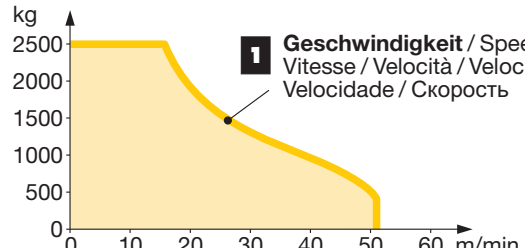
m	m/kg	Auslegersteilstellung 20° / Elevated jib 20° / Flèche inclinée 20° / Braccio inclinato a 20° Pluma inclinada 20° / Lança inclinada 20° / Положение стрелы под углом 20°																	
		10,0	11,0	12,0	12,4	13,0	14,0	15,0	16,0	17,0	18,0	19,0	20,0	20,7	21,0	22,0	23,0	23,6	
25,0	2,6 – 23,6 900	900																	
22,0	2,6 – 20,7 900	900																	
13,2	2,6 – 12,4 900	900																	



Antriebe

Driving units / Mécanismes d'entraînement / Meccanismi / Mecanismos / Mecanismos / Приводы

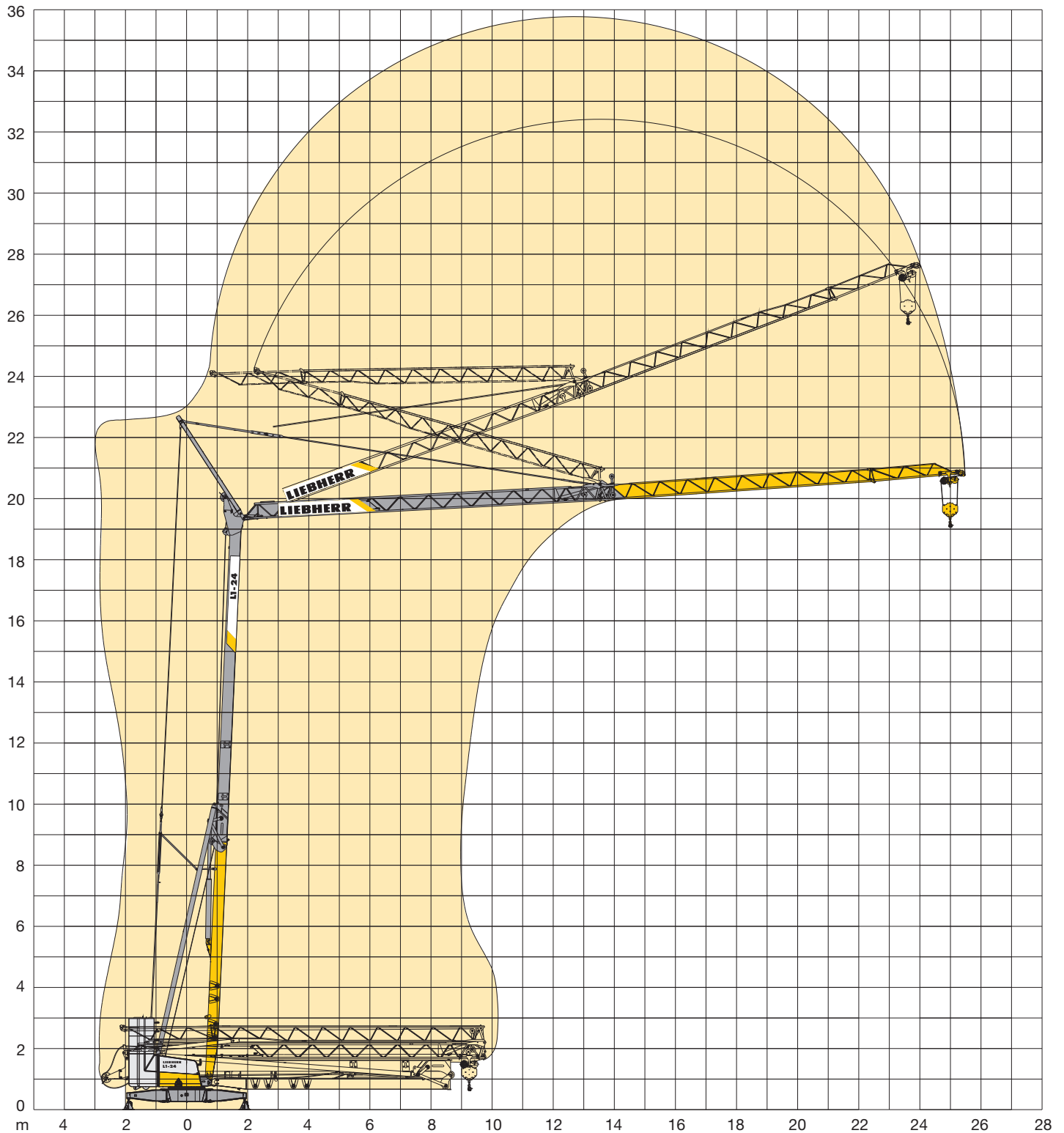
	230 V ²⁾	400 V	
		U/min 0 ↔ 0,8 sl./min tr./min	1,5 kW FU
		0 ↔ 40,0 m/min	2,0 kW FU
	ca. 160°/min.	ca. 160°/min.	2,2 kW

BGL		C.0.05.0022
------------	---	-------------

	↔ stufenlos / stepless / régl. continu regl. progressiva / sin escalones sem degraus / бесступенчатый kg m/min
7,5 kW FU	Geschwindigkeit 400 V Speed 230 V ²⁾ Vitesse Velocità 1 2500 0 ↔ 16,0 Velocidad 400 0 ↔ 51,0 Velocidade Скорость
	
400 V 230 V ²⁾	 kg 2500 2000 1500 1000 500 0 0 10 20 30 40 50 60 m/min 1 Geschwindigkeit / Speed Vitesse / Velocità / Velocidad Velocidade / Скорость

	230 V	50 Hz	16,0 A
	400 V	50 Hz	11,0 kVA

²⁾ siehe Betriebsanleitung. / see instruction manual. / voir manuel de service. / vedi manuale d'istruzione. / ver manual de instrucción. / ver manual de instruções. / см. инструкцию по эксплуатации.



Konstruktionsänderungen vorbehalten! / Subject to alterations! / Sous réserves de modifications! / Riservato il diritto di modifiche strutturali!
 ¡Sujeto a modificaciones! / Salvo modificação da construção! / Права на внесение конструкторских изменений сохраняются!

Sämtliche Angaben erfolgen ohne Gewähr. / This information is supplied without liability. / Ces renseignements sont sans garantie. / Tutte le indicazioni fornite senza garanzia. / Declinamos toda responsabilidad derivada de la información proporcionada. / Declinamos qualquer responsabilidade quanto à informação fornecida. / Все данные указаны без обязательств.

TCS-000920-LBC-01 • EN 14439:2009 – DIN 15018-H1/B3 • BGL C.0.05.0022 • 02.16 / 7

Printed in Germany.