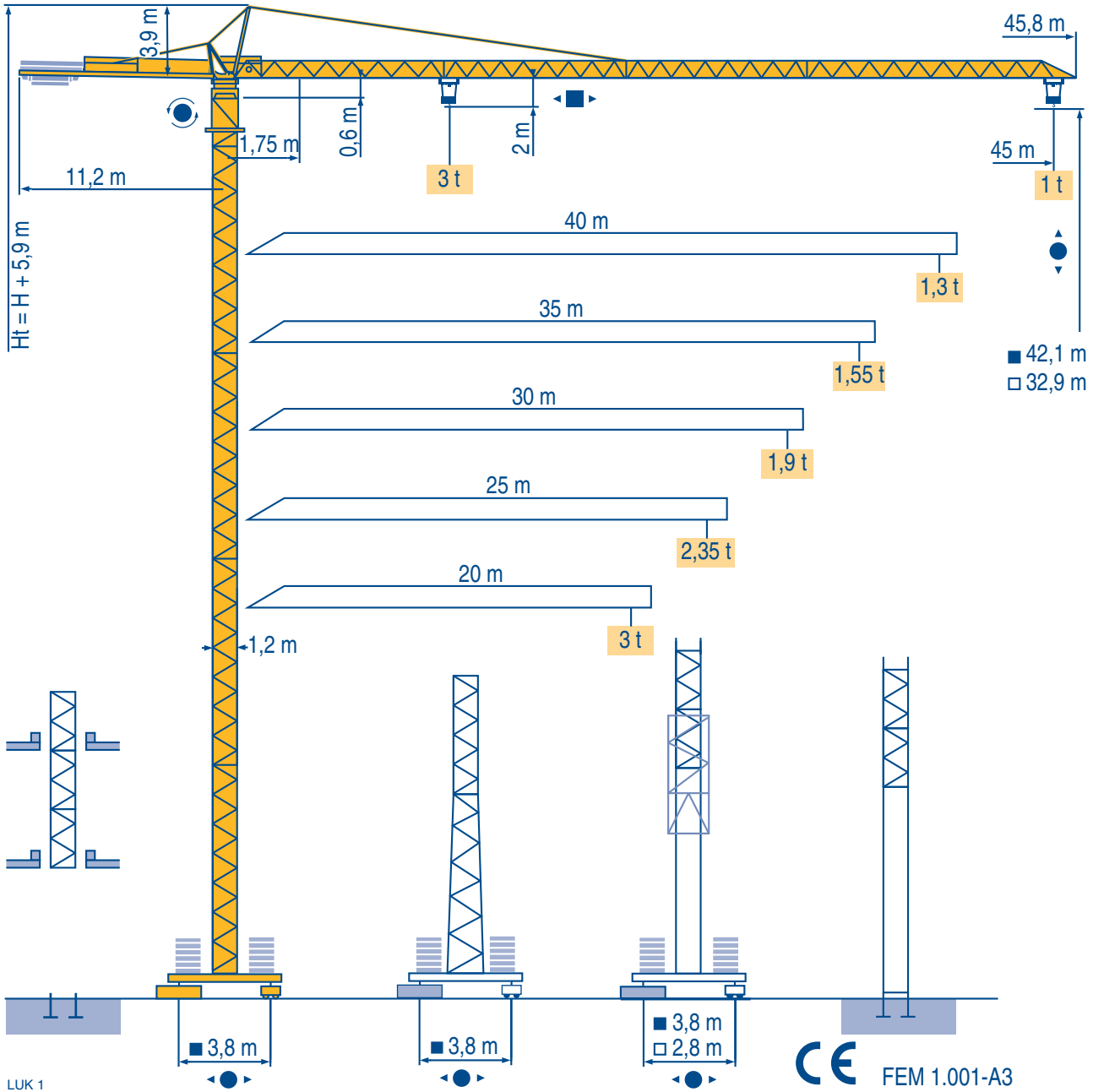


CITY CRANE MC 68 B



Igo
HD
HDM



HDT



GTMR



CITY CRANE



TOPKIT MD
MAXI MD



MAXI TOPKIT

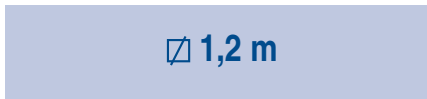


Topless MDT

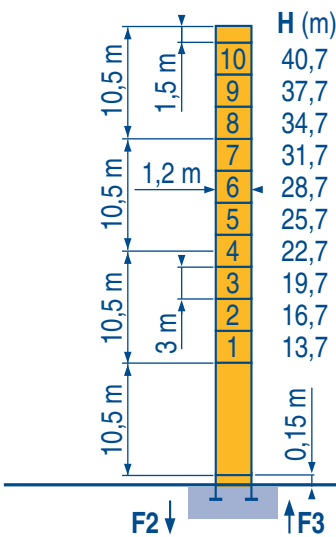


MR



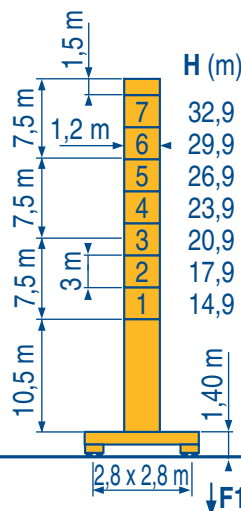


20 m → 40 m



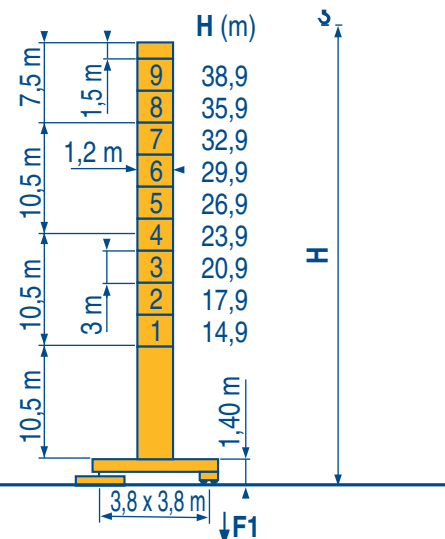
P 12 C

F2	● 62 t	■ 96 t
F3	● 49 t	■ 84 t
▲	15,5 t	



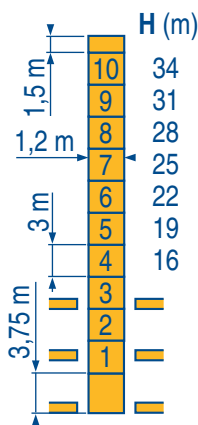
ZE 12 A

F1	● 42 t	■ 53 t
▲	18 t	



ZF 12 A / ZFC 12 A

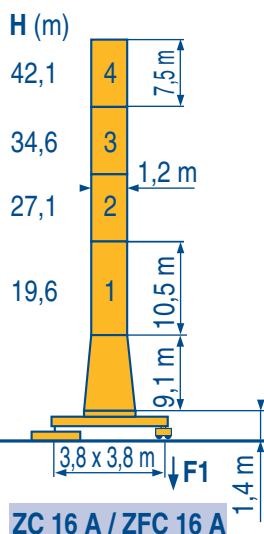
F1	● 39 t	■ 52 t
▲	20,5 t	



B 125 A / P 12 B

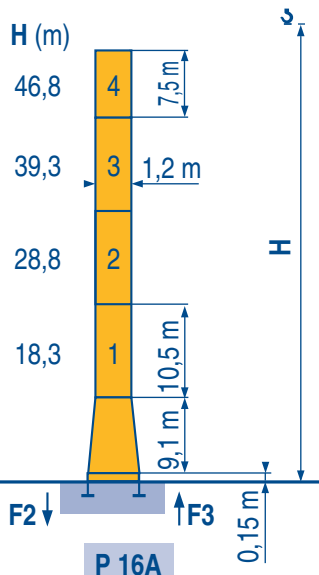


LUK 2



ZC 16 A / ZFC 16 A

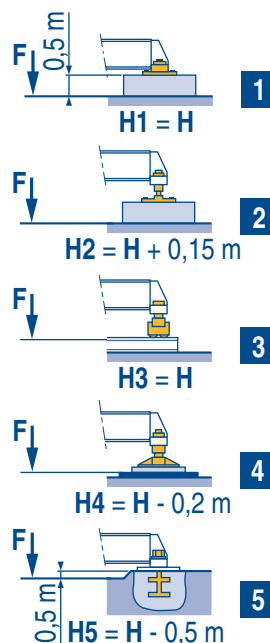
F1	● 45 t	■ 61 t
▲	23 t	



P 16 A

F2	● 57 t	■ 100 t
F3	● 42 t	■ 86 t
▲	19 t	

ZE - ZF - ZC - ZFC



● Réactions en service
■ Réactions hors service
▲ A vide sans lest (ni train de transport) avec flèche et hauteur maximum.

● Reaktionskräfte in Betrieb
■ Reaktionskräfte außer Betrieb
▲ Ohne Last, Ballast (und Transportachse), mit Maximalausleger und Maximalhöhe.

● See climbing crane
■ Reactions in service
■ Reactions out of service
▲ Without load, ballast (or transport axes), with maximum jib and maximum height.

● Vea grua trepadora
■ Reacciones en servicio
■ Reacciones fuera de servicio
▲ Sin carga, sin lastre, (ni tren de transporte), flecha y altura máxima.

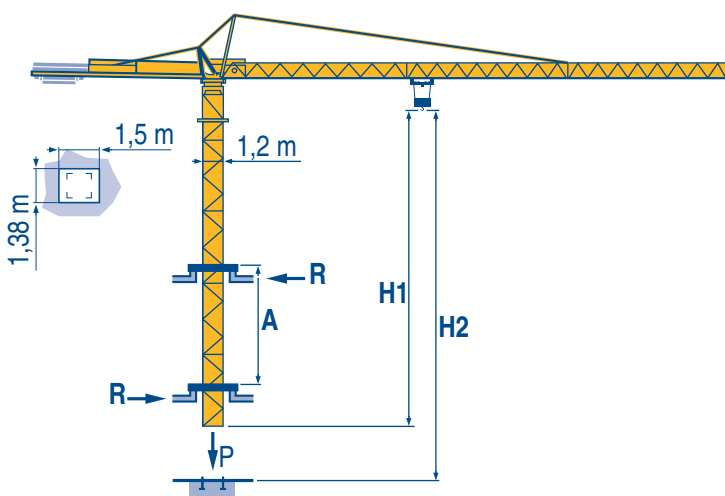
● Consultare gru in cavedio
■ Reazioni in servizio
■ Reazioni fuori servizio
▲ A vuoto, senza zavorra (ne assali di trasporto) con braccio massimo e altezza massima.

● 见楼板顶升
■ 工作状态下的反应
■ 非工作状态下的反应
▲ 空载无压重也无运输车有吊臂和最大高度

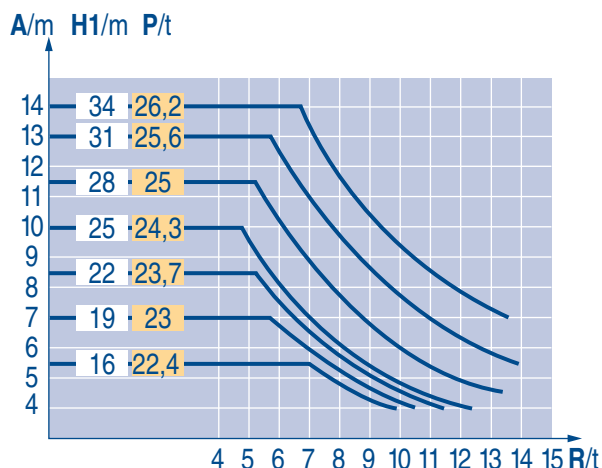
45 m	1,75 ▶	18,6	20	22	25	27	30	32	35	37	40	42	45 m
		3	2,75	2,45	2,1	1,9	1,7	1,55	1,4	1,3	1,17	1,1	1 t
40 m	1,75 ▶	20,1	22	25	27	30	32	35	37	40 m			
		3	2,7	2,3	2,1	1,86	1,72	1,54	1,44	1,3 t			
35 m	1,75 ▶	20,2	22	25	27	30	32	35 m					
		3	2,7	2,3	2,1	1,86	1,73	1,55 t					
30 m	1,75 ▶	20,2	22	25	27	30 m							
		3	2,7	2,3	2,1	1,9 t							
25 m	1,75 ▶	20,3	22	25 m									
		3	2,7	2,35 t									
20 m	1,75 ▶	20 m											
		3 t											

LUK 1

B 125 A



LUK 1



A Distance entre cadres

H1 Hauteur grue

P Poids de la grue (en service)

R Réaction horizontale

F Distance between collars

Crane height

Crane weight (in service)

Horizontal reaction

GB Distanza fra i telai

Altezza gru

Peso della gru (in servizio)

Reazione orizzontale

A Abstand zwischen den Rahmen

H1 Kranhöhe

P Krangewicht (in Betrieb)

R Horizontalkräfte

D Distancia entra marcos

Altura grúa

Peso de la grúa (en servicio)

Reaccion horizontal

E 各附着框之间距离

工作状态下塔机高度

工作状态下塔机重量

水平反力

I

C

C

C

						ch - PS hp	kW	
	15 PC 15	m/min	7	19	38	15	11	89 m
		t	3	3	1,5			
	23 PC 15	m/min	7,2	28	56	23	17	159 m
		t	3	3	1,5			
	3 D2 V5	m/min	21 - 42			3	2,2	
	RCV 40	tr/min U/min rpm	0 → 0,8			6	4,5	
	ZE - ZF 	TVD 324	26			2 x 4	2 x 2,9	
	ZC - ZFC 	RT 224	25			2 x 4	2 x 2,9	

CEI 38	IEC 38	kVA	
400 V (+6% -10%) 50 Hz		15 PC : 25 kVA 23 PC : 35 kVA	84/534 - 87/405

LUK 1

	Levage	F	Hoisting	GB	Sollevamento	I
	Distribution		Trolleying		Distribuzione	
	Orientation		Slewing		Rotazione	
	Translation		Travelling		Traslazione	
	Conforme aux directives CEE 84/534 et 87/405 sur le niveau acoustique		In compliance with the EEC 84/534 and 87/405 Instructions on noise level		Conforme alle direttive CEE 84/534 e 87/405 sul livello acustico	
	Heben	D	Elevación	E	起升	C
	Katzfahren		Distribución		变幅	
	Schwenken		Orientación		回转	
	Kranfahren		Traslación		行走	
	Gemäss EWG-Richtlinien 84/534 und 87/405 für den Schall-Leistungspegel		Conforme con las directivas CEE 84/534 y 87/405 sobre el nivel acustico		符合 CEE 84/534 - CEE 87/405 声晌度规定	

POTAIN

GRUPE LEGRIS INDUSTRIES

18.Rue de Charbonnières, B.P. 173
F-69132 ECULLY Cedex

Tél. (33)04.72.18.20.20
Fax (33)04.72.18.20.00
<http://www.potain.com>
E-mail : mkt@potain.fr

CITY CRANE MC 68 B

Copyright.Reproduction interdite © POTAIN 2000

Deutschland
POTAIN GmbH Tel : 06.105.704.0

Italia
POTAIN S.p.A. Tel : 0.331.49.33.11

Singapore
POTAIN PTE LTD Tel : (00.65) 227.1550