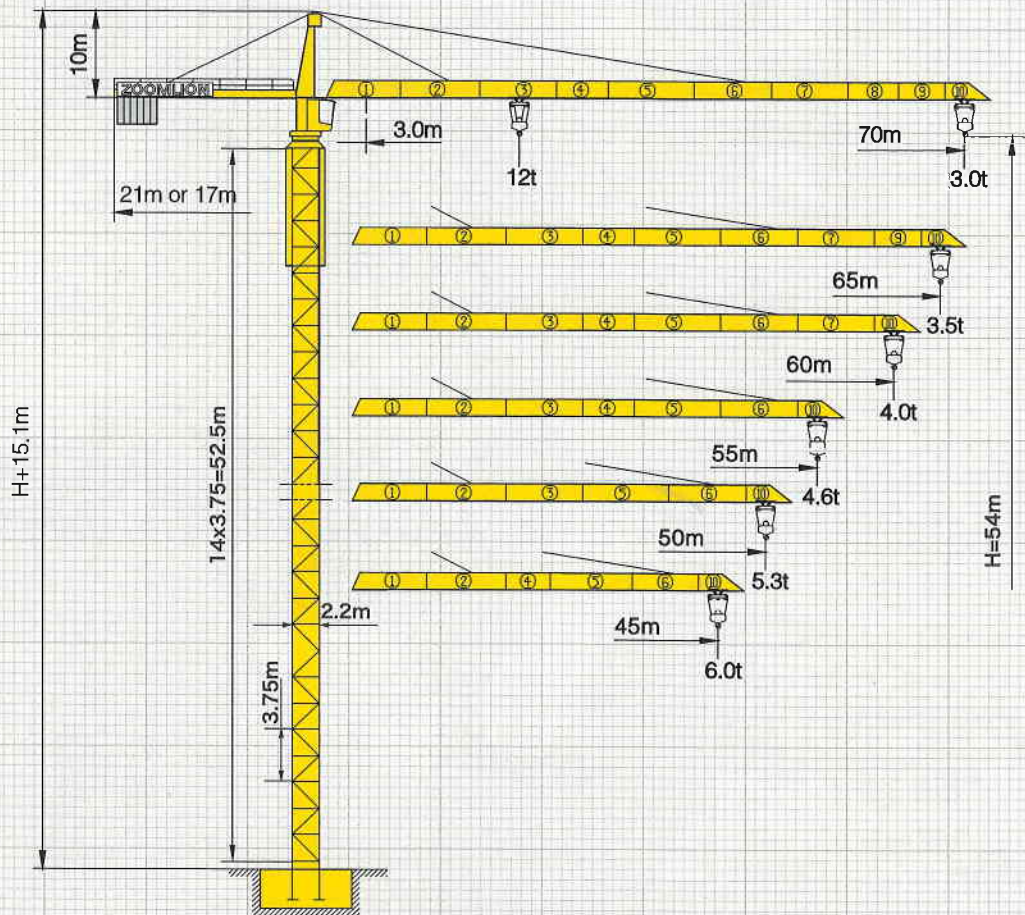
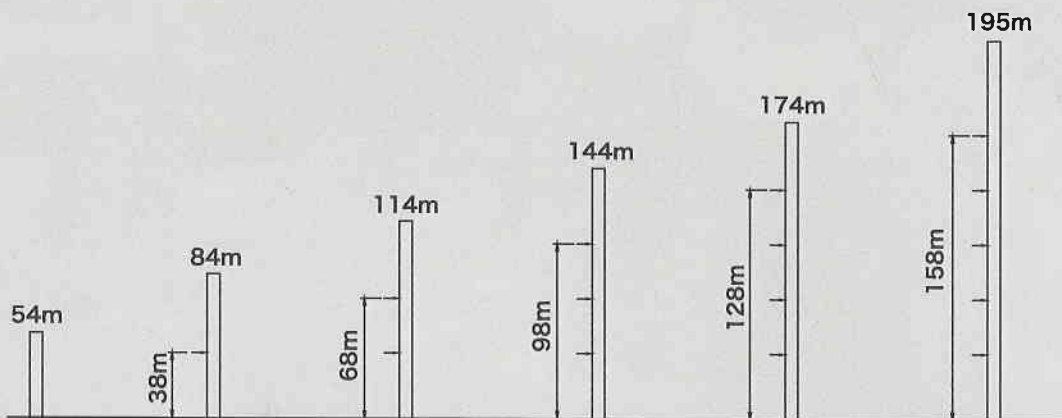


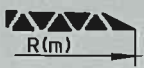
ТС7030В-12









Крепления



БАШЕННЫЙ КРАН ТС7030В-12

		Макс. г/п.	22.0	28.0	30.0	35.0	38.0	40.0	43.0	45.0	48.0	50.0	53.0	55.0	58.0	60.0	63.0	65.0	68.0	70.0	
70m (R=71.1)	⊂	3.0-40.9m, 6t	6.00							5.64	5.33	4.92	4.67	4.34	4.14	3.86	3.70	3.46	3.32	3.12	3.00
	⊂⊂	3.0-22.3m, 12t	12.00	9.21	8.49	7.05	6.38	5.99	5.47	5.16	4.75	4.50	4.17	3.97	3.69	3.53	3.29	3.15	2.95	2.83	
65m (R=66.1)	⊂	3.0-42.5m, 6t	6.00							5.91	5.59	5.16	4.91	4.56	4.35	4.07	3.89	3.65	3.50		
	⊂⊂	3.0-23.2m, 12t	12.00	9.64	8.89	7.39	6.69	6.28	5.74	5.42	4.99	4.74	4.39	4.18	3.90	3.72	3.48	3.33			
60m (R=61.1)	⊂	3.0-43.4m, 6t	6.00							5.74	5.30	5.04	4.69	4.47	4.18	4.00					
	⊂⊂	3.0-23.7m, 12t	12.00	9.88	9.11	7.58	6.86	6.45	5.90	5.57	5.13	4.87	4.52	4.30	4.01	3.83					
55m (R=56.1)	⊂	3.0-44.4m, 6t	6.00							5.90	5.45	5.18	4.82	4.60							
	⊂⊂	3.0-24.2m, 12t	12.00	10.10	9.35	7.79	7.05	6.62	6.06	5.73	5.28	5.01	4.65	4.43							
50m (R=51.1)	⊂	3.0-45.2m, 6t	6.00							5.57	5.30										
	⊂⊂	3.0-24.6m, 12t	12.00	10.40	9.55	7.96	7.21	6.77	6.20	5.86	5.40	5.13									
45m (R=46.1)	⊂	3.0-45.0m, 6t	6.00																		
	⊂⊂	3.0-25.1m, 12t	12.00	10.60	9.76	8.14	7.38	6.93	6.35	6.00											

Механизмы

	Поворот	HPV145B1.130A HPV145B2.130A		Подъём	QP12100B
	0~0.6 r/min	2×145 N.m		V	⊂ 3t 100 m/min
	Передвижения тележки	BP55B	60 kW		⊂⊂ 6t 50 m/min
	0~75 m/min	5.5 kW			⊂ 6t 50 m/min
	Перемещение	ZAH52A	390m⊕ (5 layers) ⊕ При превышении, пожалуйста, свяжитесь с нами.	IV	⊂⊂ 12t 25m/min
	0~25 m/min	4×5.2 kW			
	380V(+10% -10%) 50Hz				80.5+4×5.2 kW

